

# The Villager

The community magazine for the parishes of Martley and Wichenford

Volume 20 No. 5

October 2010

**Editor:** Michelle Higgins (01886888344)

**Editorial Team:** *Martley* Alan Boon (01886 888527), Kate King (01886 888439)

*Wichenford* Janet Andrews (01886 888303), Sheila Richards (01886 888378)

**Advertising:** Aileen Parker. 01886 888456

**Distribution:** *Martley* George & June Lawrence (01886 821064) *Wichenford* Karen Furber (01886 888449)

**Contact The Villager:** Leave articles at Martley Post Office, call Janet or Sheila (*Wichenford*) or email the Editor at [editor@martley.org](mailto:editor@martley.org)

*Opinions expressed by contributors are not necessarily those of The Villager. The Villager cannot be held responsible for any goods or services advertised in the magazine.*

## ***Regular events in Martley and Wichenford:***

### **Sundays**

**2nd Sunday in the month:**

**Teme Valley Farmers Market for local produce** 11am The Talbot, Knightwick

**Martley Ramblers** meet Church car park

**3rd Sunday in the month:**

**Path-or-Nones** meet 9.30am Martley Memorial Hall car park to help maintain the local footpaths

### **Mondays**

**Rhythm Time:** 9.30-11.30am Martley Memorial Hall *Enq.* Rachel 01886 812565

**Martley Parish Council:** 1st Monday in the month 8pm Memorial Hall

### **Tuesdays**

**Short Mat Bowling:** 2.00pm Martley Memorial Hall

**Wichenford Ladies' Fellowship:** 2.30pm 2nd Tuesday in the month (usually)

**Martley Toddler Group:** 1st and 3rd Tuesdays (term time) 10.30am Martley Memorial Hall

**Salsacise dance/exercise:** 7.15pm Martley Memorial Hall *Enq.* Steph 07774 533217

### **Wednesdays**

**Teme Valley Shufflers Line Dancing:** 7pm Martley Memorial Hall *Enq.* Jeff & Thelma 01886 821772

**Martley Folk Club:** 1st Wednesday in the month at The Talbot, Knightwick and 3rd Wednesday at The Admiral Rodney

**Martley WI:** 2nd Wednesday in the month 7.30pm Heaton House

### **Thursdays**

**Wichenford Wine Club:** 3rd Thursday in the month

**Martley & District Horticultural Society:** last Thursday in the month 7.30pm Martley Memorial Hall

See Church Words p. 27 for details of services

See articles for details of special events AND changes of time/date/venue of regular events

See the Diary page on [www.martley.org.uk](http://www.martley.org.uk) for a complete listing of all forthcoming events (that the Diary page editor knows about)

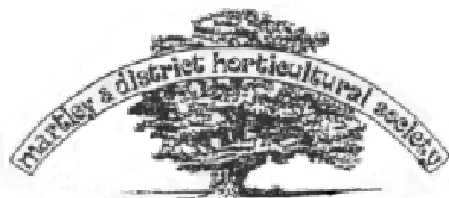
See page 28 for contact details of organisations

***Articles to go in The Villager must be submitted by the 1st of the previous month***

***Records of the Parish Council meetings in the two parishes are not intended to be full and complete minutes. Minutes of meetings can be seen by contacting the respective Clerks to the Councils.***

# OUT AND ABOUT IN MARTLEY

Visit our website—[www.martley.org.uk](http://www.martley.org.uk)



## Martley and District Horticultural Society

The Annual Fete and Flower Show was held on 21 August, slightly later than most years. A rather wet morning did not seem to deter the entrants as the number of entries was even higher than 2009! Some real quality produce was on view – in particular wonderful big beetroot, an amazing pair of lettuce, superb cauliflowers and an absolutely perfect pair of marrows! Lovely rosy apples deserve a mention among the varieties in the fruit section, and the pot plants were quite spectacular. Gorgeous roses, elegant floral art (exquisite arrangement in shells); ‘harvest’ ones, ‘blue/white’ and ‘green/white’ and ‘foliage only’ – all done beautifully and pleasing to the eye. Lots more to be seen of course but too numerous to mention. Well done all growers and arrangers and thanks to all who helped to get everything ready and on the day itself.

### *Trophies for the Summer Show*

Entrants 39, entries 389

*R Lloyd Gibbons Open Challenge Cup* – Elaine Rice – best exhibit in show.

*Messrs Landale & Son Challenge Cup* – R Evans – most points in vegetable section.

*F W Morris Challenge Cup* Mike Dunnett, most points in flower section.

*Ted Whelan Memorial Trophy* John Jeffries, most points in floral art section.

*Shield* Lucy Williams, under 11yrs children section.

*T W Sanders Trophy* T Gale, most points in fruit section.

*Shield* Angela Everiss, most points in cookery section.

*Charlie Amos Memorial Trophy* J B Steele, most points in onions & shallot classes.

*Wilf Hill Memorial Trophy* D Goodyear, for the best fuschia.

*Society Cup* Mike Dunnett, club member gaining most points.

*John Clarke Memorial Cup* T Gale, best tomatoes.

*C & H Barnard Trophy* D Goodyear, 3 blooms of roses.

*Wendy Stinton Memorial Shield* D Goodyear, flowering pot plant.

*Banksian Medal* R Evans, highest amount of prize money.

*Jack Millward Memorial Trophy* Mike Dunnett, best gladioli.

*Trophy* Barbara Kirby, most points in preserves.

*Smallholder Trophy* T Davis, best exhibit in vegetables.

*Claudia Steele Martley Poetry Cup* John Crabbe, best poem.

There is to be a Quiz Night on Thursday 14 October at 7.30pm in Martley Village Hall.

*Tina Steele*



### ***Martley & Villages Carers' Support Group***

Worcestershire Association of Carers regret that they are unable to continue the Support Group for Carers which had been meeting at Heaton House on the first Monday morning of each month. There will be no further meetings for the present, although we will review support options for this area for the future. We have closed the group because the number attending has been too small to make a viable group. Carers Groups continue to meet at Worcester, Malvern, Stourport, Kidderminster, and other locations and any carer is welcome at these. Contact Helen Lubin on 01905 730683.

### ***Martley 100 Club***

This month's 100 club winners are, 1st number 169 Keith Bedworth, returned

subscriptions to 18 R Fellows and number 76 Shelia Dysons. Congratulations to all our winners and thank you to our drawer Carolyn Woodward.

*Clair Corbett*

### ***Distribute The Villager!***

Hi - I am losing a distributor in September, so would you would be willing to deliver 23 copies of The Villager in the Newtown area? If so, give me a ring please. My number is 01886 821064. Many thanks.

*June Lawrence*



### **MAD Kidz**

Congratulations to Louise and helpers on the success of the first Mad Kidz summer school. Ten children attended (we would have liked more!) and had a very enjoyable time. On the last day they gave a very confident performance, singing, dancing, acting and miming to an audience of family and friends. Well done all of you! We look forward to seeing you again next summer plus anyone else who fancies having a go!

### ***Martley Ramblers***

#### **2pm 10 October Church car park**

It's quite amazing how quickly this year of walking has gone. Only two more to come. This month cars leave Church car park to meet Colin Hill who will be leading around Alfrick; not quite foreign climes but away from our home patch. It is time to be

thinking of next year's programme. Do you want a brisk, head-down quick walk or a more leisurely one with time to enjoy the scenery and flowers? Think about it and be ready with suggestions at the November AGM.

*Kate King*



**Martley WI**

**Wednesday 13 October  
7.30pm Heaton House**

The walk around Worcester, led by Sandy Cale, looking at Georgian facades and places of interest, was most enjoyable and those of us who ate later at Broadwas Royal Oak felt it was a pleasant way to end the evening. What are we going to discover when we go "Down the Garden Path" with Adrian James this month? Does the competition for "Preserves, Pickles & Chutney" give us a clue? We had a wonderful supply of the above, plus cakes, at the Horticultural Show. In spite of some torrential rain, there were plenty of customers who were happy to buy and our funds received a very welcome boost.

Plans are going ahead for Saturday 13 November when we are organising a "Do" in aid of Troop Aid to raise funds for 'grab bags'. Grab bags contain toiletries and other essentials for injured troops from Afghanistan who arrive back in the UK with no belongings. It begins at Martley Village Hall at 2pm with afternoon tea and cakes, stalls with handicrafts, bric-

a-brac, books, magazines, an 'As New' rail and much more. It could be an opportunity to get some early Christmas presents. Please come and support the WI effort for our troops.

*Kate King*



**Teme Valley Children's Centre  
Antenatal & Postnatal Courses**

### **Antenatal**

There is evidence to suggest that women cope better with their labour if they have attended antenatal classes. Amongst other things, you learn about what to expect during labour, birthing skills and tips on how both parents can cope during labour and afterwards. The Children's Centre has been working hard to put together a course for parents-to-be and we are pleased to announce that the next course will be taking place in November at Clifton-Upon-Teme Village Hall.

During the 4-week course there will be information from health professionals speaking about maternity rights, the labour itself, breast feeding and early days at home. If you are expecting a baby in the next 6 months and would like to meet people in a similar situation please register for what is likely to be a fun, informative and sociable course. The course is free and refreshments will be provided.

### **Postnatal**

Have you just had a baby? Do you know someone who has? Being at home with a newborn can be great fun and provides the perfect opportunity to bond with your baby, but at times it can make you feel quite isolated. The Children's Centre appreciates the valuable support that can be provided by parents in a similar situation and organises postnatal courses for parents with babies up to 6 months old.

Experts visit the course to discuss feeding, sleeping, dental hygiene and weaning over a sociable cup of tea. The sessions are also a perfect opportunity to hear about the many services provided by the Teme Valley Children's Centre. This course is free and refreshments are available. Experience gained from previous courses has shown that many of the mums who meet at these courses still meet up regularly. Our next postnatal course will be taking place in October at Upper Sappey Village Hall.

For more information on either courses, or to book yourself on please contact Sam at the Children's Centre office on 01886 812982 or by email at [sam.billingham@barnardos.org.uk](mailto:sam.billingham@barnardos.org.uk)

*Hilary Higton*

*Children's Services Manager,  
Barnardos  
Teme Valley Children's Centre*

### *Charity Event*

*By Martley WI*

*Saturday 13 November*

*2pm Martley  
Village Hall*

*to raise funds for*

*Troop Aid*

*Tea room*

*Raffle*

*Crafts stall*

*Bric-a-brac*

*Books and magazines*

*"As new" – garments at a  
fraction of the original price*

***and more!***



### **Martley Harvest Celebration 2010**

**Saturday 2 October 2010**

**7.00 pm**

**At Martley Village Hall**



**Tickets:**

**Adult £7.50**

**Primary-Age**

**Child £5.00**

## ***Martley Parish Council***

Edited draft record of the meeting held on Monday 9 August 2010 at the Memorial Hall

### **The Democratic Period/Public Question Time**

A parishioner raised concern regarding the public house signs being an obstruction both to the road and the footpath. District Cllr Williams is to investigate.

### **Minutes:**

The minutes for the previous Parish Council meeting were approved as a true record of the meeting with further detail being added to 42-10 (d) to clearly state the invoice was for the annual service/maintenance to the church clock.

### **Outstanding actions from previous minutes:**

Milestone plate to be discussed at next meeting as the grant application may be unsuccessful. Graffiti on Hillside sign has been chased. The Hub has asked Highways to provide a target date for completion. MHDC Business Rates Team has asked the Clerk to contact them by telephone to clarify any changes in criteria, rather than by e-mail. Awaiting response from Highways on reported faults such as overhanging branches, pot holes and drains. Cllr Clarke confirmed that the pot hole at Panes Bank has been addressed. The Clerk to confirm the date of the Freedom of Martley presentation. The Clerk will write to committees with Parish Council representation for updates on dates of meetings. The Clerk establish date of

next YIMMS event.

### **Progress Reports:**

The Clerk: Festival Housing confirmed that at Heaton House the grass will be removed. On all other sites in Martley the grass will remain and due to the number of sites and that sometimes grass has to be cut when wet. The Clerk will contact Yarrantons again regarding concerns raised by parishioners. Cycle races - an e-mail to the clerk confirmed that time trials are not classified as "races" and therefore have slightly different regulations.

Lengthsman: the Clerk will ask the lengthsman to pick up the rubbish from the Hillside lay-by each week; dig the drains out at the end of Kingswood Lane; clear mud from by the weighbridge.

Speed signs: funding has been pledged for two further VA signs to be used by Parish Councils. More details to follow.

Training: training has proved valuable and one item raised during the training will be discussed each month

### **District and County Cllr's reports:**

District Cllr. Williams reported that the outline planning application for the 49 homes had been withdrawn by the applicant; probably linked to the RSS being scrapped. MHDC will continue to work on the South Worcestershire Local Plan. She confirmed the following (abbreviated report) in terms of work on the Strategic Housing Review: "Up until a few months ago, MHDC had been preparing for a Strategic Housing

Review by the Audit Commission. However, following the abolition of the Comprehensive Area Assessment, the Audit Commission agreed not to go ahead with the formal Review, but instead to work with MHDC to ensure our housing function is as good as it can be ... The Audit Commission has recommended that we focus on enhancing the strategic management of the housing service, as well as working to meet the needs of older residents and the future demand of an aging population. It was also recommended that we revise targets for affordable accommodation especially within rural areas ... The Executive approved plans to begin consultation on the future management of the housing service ... findings should be announced by the end of the year."

### **Planning:**

#### *New*

10/00893/FUL Land adj. Three Acres, Willow Road – Proposed stable block and change of use from agricultural to equestrian land.

10/00868/HOU Fair View, Pudford Lane – Two dormer windows to front and two in attic gable to rear.

10/00800/CCO The Noak – Application for approval of Details Reserved by Condition – Conditions 3-7 of planning permission 08/01903/FUL.

09/01209/TPA Apartment 1, Laugherne House – Reduce one lime by approximately 30%.

08/01584/CCD Hill Top Farm, Horsham – Application for approval

of details reserved by condition – Conditions 7 & 12 of planning permission 08/00473/FUL.

#### *Withdrawn by applicant*

10/00678/OUT The Crown – Outline application for up to 49 dwellings (21 affordable).

#### *Refused*

10/00571/CCO Rodge Hill Farm – Condition 6 of previous application.

10/00581/CCO Rodge Hill Farm – Condition 6 of previous application.

Clarification was given to a recent application made on The White House within Martley for a certificate of lawfulness and why planning permission was not needed in this instance.

### **Finance:**

The accounts for July will be re-submitted for authorisation at the next meeting due to an administration error. The electricity charges for the weighbridge were discussed .

### **Councillors reports and items for future agenda:**

The Clerk is to speak to Worcester County Council regarding Officers on quad bikes riding on footpaths through the village spraying herbicide. Cllrs. Goodyear and Gale will look at the wood on Hockhams Lane as parishioners have raised concern regarding overgrowth. The Clerk will report potholes at the entrance to St. Peters Drive to Highways. Work will commence shortly on the footpath running from The Crown to opposite the entrance to Mortlake Drive. This will involve the use of temporary traffic control.

**Date of next meeting:**

Meetings are held on the first Monday of the month (Bank Holidays excepted).

***Martley's Past***

It is interesting to read of what is important to Martley Parish Council in 1914. For instance in January 1914, the PC passed a resolution containing the following extract: "This Parish Council urgently calls the attention of the County Council to the increasing demands made by the CC upon Ratepayers and that if the CC cannot remedy the existing conditions, which in many ways are unfair to Ratepayers, a demand should be made that the cost of such things as the upkeep of the main roads and of Higher Education should be a charge upon the Imperial Exchequer and not upon Local Rates."

In the next meeting (April 1914) just the Chairman and Overseers were elected.

And the next (July 1914) there was no business except reading and signing minutes of April 1914!

The next (15 October 1914) was adjourned until 30 October – not to mention the outbreak of war with Germany, but to pass the following resolution: "That this meeting of Martley Parish Council regrets to learn that the Local Government Board still persist in insisting on the removal of children from the Martley Union Workhouse, which, according to the Guardians report 'only average 8'. That means increasing our Rates,

which at time are sadly too High and keep increasing, without seeing anything in return for the expenses incurred. If the Order is enforced it is almost certain the present Staff of Officers would not be reduced, we believe there would not be any real advantage to the children in any shape or form as the conditions under which they live, and the adequate means of Education being almost ideal. We appreciate the efforts of our Guardians in trying to get relief from this Order and pledge our support of them in this matter which we believe to be impractical."

Note: There were 30 parishes contributing to the Union Workhouse.

*A L Boon*

---

**Martley Library Opening Times**

Monday 2—7 pm

Wednesday 4—6 pm

Thursday 10am -1 pm

Friday 2 - 4 pm

Saturday 10am -12 noon

---

---

***Concert of Christmas music***

**There is to be a concert of Christmas music with a raffle to be presented by the Ferndale Singers on Saturday 11 December at 7.30pm in Martley Village Hall. Admission £5 to include wine and light refreshments. Proceeds of the raffle to be donated to charity.**

---





# Over the Garden Wall in Wichenford

**WICHENFORD NEEDS YOUR NEWS**

**Janet Andrews**

**01886 888303**

**Sheila Richards**

**01886 888378**



## ***Church Flowers***

3 October Harvest Festival  
10 October Flowers as above  
17 October Mrs Randall  
24 October Mrs Pargeter  
31 October No service at Wichenford

## ***Harvest Supper***

The Wichenford Harvest Supper will be in the Memorial Hall on Saturday 9 October, 7.30 for 8pm.

## ***Ladies Fellowship***

Ladies Fellowship will meet in the Memorial Hall on Tuesday 19 October at 2.30pm.

## ***Fundraising Auction***

The Committee of the Nora Parsons Day Centre will be holding an auction on Saturday 30 October at Martley Memorial Hall at 7.30pm. (Please note revised date).

Tickets will be £3 which will include a glass of wine or soft drink and will be available from Day Centre and Central Stores, Martley or any Committee Member. Goods donated for auction

will be sold by silent auction. The promises that we receive will be auctioned by Dave Bradley of BBC Hereford & Worcester. His able assistant will be Cath Mackie, Patron of the Day Centre.

If anyone has any items or an offer of services they would like to donate for either the silent auction or the promises auction, please call the Day Centre on 01886 888374 or me on 01886 888472 and we will arrange collection.



Please come along on 30 October and enjoy a fun evening whilst supporting this really worthwhile cause – don't forget to bring your wallets!!

*Janet Dale, Secretary*

## ***George Johnson***

**6 December 1924—12 July 2010**

George was born in 1924 at Hollington, North Staffordshire, one of four children, and lived in a rural farming community. From school, George went straight into farm work during the early part of the Second World War. Often teams of men would go from farm to farm to help out with the harvest and it was on one such visit that George met a young land girl, Margaret, whom he married in 1948. After Ken and then Sue were born, George decided that the family's future was in Canada, and they went to seek a new life. However, they moved back and George took a job milking Guernsey and Jersey cows for Col. Marsh at Monkhopton, near Bridgnorth. Thus began 20 years or so of looking after and showing dairy herds, winning scores of cups, prizes and hundreds of rosettes. The pinnacle of his showing career was winning Supreme Champion with a bull at the Royal Show.

After completing the family with another daughter, Jenny, and son, Mike, George moved to the Cob House Farm Wichenford to become stockman for William Banks in 1974. After 17 years, George and Margaret made their final move to Hindlip – the idea was to retire and take it a bit easier but George had to have his goats, sheep and hens and he helped out at Worcester Market and then at Checketts of Ombersley until 2006.

George had many interests including helping out at youth clubs and Young

Farmers. He was one of the founder members of Mourville Agricultural Society and latterly president of Worcester Goat Society for many years. He enjoyed going to sheep dog trials, ploughing matches, steam fairs, moto x, grass track and stock car racing. In the '90s George became involved with the Rare Breed Survival Trust, particularly North Ronaldsay Sheep, going to North Ronaldsay in the Orkney Islands to help with the annual round up, involving two days travel and two ferries each way - all very hard work and done on a voluntary basis—George was in his 70's by then! George continued to enjoy going to market, discussing prices and having a cup of tea and a chat. He loved spending time with his ever expanding family and keeping up with everyone's lives. George led a full and colourful life, was well respected and was indeed a very nice man. He will be greatly missed by all who knew him, especially his wife, Margaret, children Ken, Sue, Jen and Mike and all his 11 grandchildren and 8 great grandchildren.

---

## ***Volunteers Needed for Museum***

The Elgar Birthplace Museum runs primarily on the kind support of almost 40 volunteers and we would like to add to our great team. The Museum is a wonderful location in Lower Broadheath with displays and exhibits dedicated to exploring the life and music of Sir Edward Elgar. The

Museum opens from 11:00am until 5:00pm, seven days a week. For each day we have two volunteers in the morning (11-2pm) and two in the afternoon (2-5pm). We are looking for volunteers that are willing to do any day of the week, morning or afternoon but we ask that each volunteer gives a minimum of three hours a fortnight.

*Rachael Whyte*

*Museum Assistant (Administration)*

*The Elgar Birthplace Museum*

*birthplace@elgarmuseum.org*

### ***Dates for Your Diary***

**Angel Awareness Day** Sunday 10

October

**Hallowe'en:** Sunday 31 October

**All Saints Day** Monday 1 November

**Guy Fawkes Nights** Friday 5

November

**Remembrance Day** Thursday 11

November

### ***Coming Next Month***

A poem for Remembrance Day by  
local poet Derrick Jinks

### ***Transition News***

#### **Reskilling and education**

What could a world without oil look like? For a start, as things made of plastics deteriorate and fall to pieces, we will not be able to replace them. Think for a moment what you use every day that has plastic in it – radios, TVs, MP3 players, computers, (heaven forbid!) toothbrushes, lunchboxes, biro, your dog's food bowl, shoes and, well, just about everything! Recognising that, our

future selves will need to be able to create “stuff” for ourselves, and learn how to look after it and repair it, and that will probably mean re-learning old skills that might have been lost and discovering new ones that could be essential to life in a post-carbon world. Radio Hereford and Worcester have started to compile a register of skills that listeners have, with a view to passing on contact details to others who need those skills. What a good idea! What can you do that someone else might benefit from? Could you teach someone how to mend a hole in a knitted glove so they can continue to wear the glove, for example. Could you help someone prepare the ground and sow their first vegetable seeds? Do you know how to make a willow basket? Last month. Someone contacted The Villager with ideas on generating electricity locally and even developing a mill to grind flour. In “the old days” every community would have had its mill, and even today in developing countries people still use “human-powered” technology to grind corn for their daily food. We need engineers and tool-makers to keep their skills alive – we will need those skills. Transition Malvern, (<http://transitionmalvern hills.org.uk/transition>) is taking a strongly positive and proactive approach and sees the inevitable challenges before us as an opportunity to rethink our ways of life and to make some fresh choices about the kinds of communities and environment to which we want to relate. The underpinning arguments

### ***Little Witley's October film***

Little Witley's October film is *The Reader*, be showing on Saturday 30 October. In postwar Germany, a young man (played by David Cross as a young man, and Ralph Fiennes as an older man) begins a decades-long obsession with an older woman (Kate Winslet) ending in a war crimes trial, where he learns an awful truth about her. An unforgettably powerful film.

See details of the Little Witley Film Society on the Leisure page of [www.martley.org.uk](http://www.martley.org.uk) or phone Jean Latham on 01886 888888122 or Bob Jose on 01886 888383.

are that the period of cheap fossil fuels has now passed, that climate change is happening whether we like it or not, and that a positive and planned response to change will leave us in a much stronger position than simply waiting for the consequences to befall us. For example, Nic Harrington says on the Transition Malvern website: "I would like to see created a tool-bank, from which anyone in Transition could borrow, (or possibly buy, if duplicates occur), tools when needed. Any funds thus generated to go to Transition coffers. Creating a tool bank will entail collecting together unwanted or unused tools, refurbishing them, and making their availability known to Transitioners.

### ***RoSPA Firework Top Ten Safety Code for Adults***

Young people should watch and enjoy fireworks at a safe distance and follow the safety rules for using sparklers. Only adults should deal with firework displays and the lighting of fireworks. They should also take care of the safe disposal of fireworks once they have been used.

1. Plan your firework display to make it safe and enjoyable.
2. Keep fireworks in a closed box and use them one at a time.
3. Read and follow the instructions on each firework using a torch if necessary.
4. Light the firework at arm's length with a taper and stand well back.
5. Keep naked flames, including cigarettes, away from fireworks.
6. Never return to a firework once it has been lit.
7. Don't put fireworks in pockets and never throw them.
8. Direct any rocket fireworks well away from spectators.
9. Never use paraffin or petrol on a bonfire.
10. Make sure that the fire is out and surroundings are made safe before leaving



The aim, besides the creation of the tool-bank, would be to acquire/polish skills, and begin the formation of the group." Anyone willing to take up the challenge??

*M Higgins*

# The Villager Halloween Special

---

Halloween (also spelled Hallowe'en) is an annual festival observed on 31 October. It has roots in the Celtic festival of Samhain (pronounced "sow-in") and the Christian holiday All Saints' Day, but is today largely a secular celebration and Halloween activities include trick-or-treat, wearing costumes, carving pumpkin lanterns, ghost tours, telling scary stories, and watching horror films. Carving pumpkins is associated with Halloween in North America where pumpkins are both readily available and much larger. Many families that celebrate Halloween carve a pumpkin into a frightening or comical face and place it on their doorstep after dark. The American tradition of carving pumpkins was originally associated with harvest time in general, not becoming specifically associated with Halloween until the mid-to-late 1800s.

The word *Halloween* is first recognised in the 16th century and represents a Scottish variant of the fuller *All-Hallows-Eve*, that is, the night before All Hallows Day. The phrase *All Hallows* derives from a phrase in Old English meaning the feast of all saints. The word "hallow"

means to consecrate or set apart as being holy or to venerate as being holy, and has its origins in the German word "heiligen", meaning holy. (Useful information for Harry Potter fans!)

The ancient Celts believed that the border between this world and the Otherworld became thin on Samhain, allowing spirits (both harmless and

harmful) to pass through. The family's ancestors were honoured and invited home while harmful spirits were warded off. It is believed that the need to ward off harmful spirits led to the wearing of costumes and masks. Their purpose was to disguise oneself as a harmful spirit and thus avoid harm. Samhain was also a time to take stock of food supplies and

slaughter livestock for winter stores. Bonfires played a large part in the festivities. All other fires were doused and each home lit their hearth from the bonfire. The bones of slaughtered livestock were cast into its flames. Sometimes two bonfires would be



built side-by-side, and people and their livestock would walk between them as a cleansing ritual. Another common practice was divination, which often involved the use of food and drink, such as throwing a string of apple-peel over the shoulder and divining the initial letter of the name of future lover or spouse from the way the peel had landed on the floor.

*M Higgins*

## ***Crafty Concoctions for Witches, Wizards and Creatures of the Night***

### ***Spider web chocolate fudge muffins***

Makes 10 muffins

50g dark chocolate (55% cocoa solids is fine)

85g butter

1 tbsp milk, water or coffee

200g self-raising flour

½ tsp bicarbonate of soda

85g light muscovado sugar

50g golden caster sugar

1 egg

142ml carton soured cream

100g dark chocolate (as above)

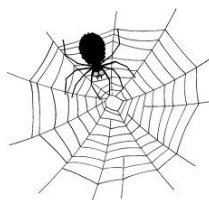
100g white chocolate

1. Preheat the oven to 190C/gas 5 and line a muffin tin with 10 paper muffin cases. Break the chocolate into a heatproof bowl, add the butter and liquid. Melt in the microwave 30-45 seconds. Stir and leave the mixture to cool.
2. Mix the flour, bicarbonate of soda and both sugars in a bowl. Beat the

egg in another bowl and stir in the soured cream. Pour this on the flour mixture and add the cooled chocolate. Stir just to combine - don't overmix.

3. Spoon the mixture into the cases. Bake for 20 minutes until well risen, let them sit in the tins for a few minutes, then lift out and cool on a wire rack.
4. For the topping, make two piping bags out of greaseproof paper (or cut the ends off two clean plastic bags). Break the dark and white chocolate into separate bowls and melt in the microwave on Medium for 2 minutes (or over a pan as in step 1). Put 2 spoonfuls of dark chocolate in one bag and the same of white chocolate in the other.
5. Working with one muffin at a time, spread with dark chocolate from the bowl, letting it run down a bit, then pipe four concentric circles of white chocolate on top. Using a small skewer, drag through the circles at regular intervals, from the centre to the edge, to create a cobweb effect. Repeat with four more muffins.

On the remaining five, spread over the white chocolate and decorate with the dark. Best eaten the day they're made—even better while the chocolate's soft.



### ***Tiny Toads***

Makes 12

2-3 tbsp sunflower oil

85ml milk

1 egg



50g plain flour , sifted  
12 mini cocktail sausages  
tomato ketchup , to serve

1. Preheat oven to fan 200 gas 6. Put a generous half-teaspoonful of sunflower oil in the bottom of each cup of a deep 12-hole mini muffin pan set on a baking tray.
2. Pour the milk into a jug, add the egg, flour and a pinch of salt and whisk everything together with a hand blender or wire whisk until a smooth batter forms.
3. Put the muffin pan in the oven for a minute or so until the oil is very hot. Carefully remove from the oven and quickly fill the cups just under two-thirds full (this may not seem enough batter, but they puff up in the oven). Drop a sausage into each cup and bake for 20-25 minutes until golden brown, well risen and crisp. Serve with ketchup.

### ***Hubble Bubble Pumpkin Pot***

Serves 4

2 leeks, thickly sliced and washed to remove any grit  
8 rashers smoked bacon , chopped  
350g/12oz pumpkin flesh, cut into chunks (or use butternut squash)  
50g butter  
1 chicken stock cube  
250g long grain rice

***Hubble.*** Toss the leeks, bacon and pumpkin together in a large microwaveable bowl. Dot the butter on top and cover the bowl with cling film or a plate. Pierce the cling film a couple of times if using and



microwave on High for 5 minutes until everything's hot and starting to cook.

***Bubble.*** While the veg is cooking, bring a kettleful of water to the boil and make 700ml/1 1/4 pints stock using the cube. Carefully remove

the bowl from the microwave and uncover, watching out for the hot steam. Tip in the rice and season with salt and pepper, then pour in the stock and stir to mix.

Cover the bowl with a fresh piece of cling film or the same plate and microwave on High for 10 minutes. Uncover and give it a stir, then microwave for 5-10 minutes until the rice is cooked. Leave to stand for 5 minutes before giving everything a final stir. Serve scooped straight from the bowl.

### ***Sticky Popcorn Pots***

50g popping corn

140g salted butter

140g light muscovado sugar

1. Put the popping corn in a lidded bowl and microwave on High for 2 1/2-3 mins.
2. Tip into a big bowl and repeat four more times. The corn can be kept in an airtight container up to a day. Meanwhile, melt the butter in a pan, then tip in the sugar. Heat gently until the sugar has dissolved. Pour the caramel over the popcorn and stir to coat. Cool, then serve in plastic cups.

*Recipes from BBC Good Food*

# In the Garden



## In the Garden in October

If you are thinking of trying something new in your garden, there is still time to plant container-grown trees, shrubs and climbers. The soil is still moist but not too cold and this will give the plants time to establish their roots before winter. If you don't make use of all your garden why not grow some fruit next year? Autumn raspberries are very easy; you will have fruit in August and September and simply cut the canes to the ground in February. New canes then grow

© Pamela Perry  
Acclaim Images.com  
0515-0910-2901-323



from the root, the fresh fruit is delicious and it freezes well. Good varieties are 'Autumn Bliss', 'Malling Admiral', and

'Himbo Top'. Or, what about a fruit tree? Try the plum 'Jubilee'. On a modern, dwarfing rootstock, it will be a manageable size and the fruit is like a large 'Victoria', ready in late August. There is also the bonus of attractive blossom in the spring. Blueberries are popular at the moment, the plants are quite expensive to buy and set up, as you will need to grow them in a large pot of ericaceous compost, but

perhaps worth considering as a gift to a blueberry fan! (Be sure to choose a variety that is self-fertile if you are only buying one plant).

In the flower garden, perennials can be cut back as they die back. Don't be too tidy - those late flowers are a valuable food source for insects, but beware of leaving too many seed-heads or you will have lots of self-sown plants to weed out next year. Over the next few weeks you will also need to lift and store dahlias and cannas and bring other tender plants inside. Keep dahlia tubers dry and cannas damp. If you haven't yet planted your spring bulbs, do it soon, and plant out spring bedding such as polyanthus, wallflowers and pansies. If you often use fresh mint or parsley, pot some up and bring indoors for use over winter. Reduce feed and watering for house plants as the days get shorter.

21 October is Apple Day. Webbs of Wychbold are holding an Apple Event, with displays of apple varieties and tasting sessions on Saturday 9-Sunday 10 October. Hereford Cider Museum has a Cider-making Festival and Apple Day, together with an exhibition by the Beekeepers Association on Saturday 16-Sunday 17. There are also Apple Fairs at Tenbury and Leominster on Saturday 17 October.

JC







### ***Make Your Own Leafmould***

Autumn leaves rot down into a wonderful, brown, crumbly material called leafmould. It is a great soil improver, lawn conditioner and mulch, and can be used in seed and potting mixes too.

***Do use*** all leaves that fall in the autumn. They will be brown and look dead.

***Don't Use*** evergreen leaves - such as holly, laurel Or Leyland cypress and other conifers, as these leaves take a very long time to decompose and some, like laurel and Leyland cypress, also contain plant toxins.

### **Good Things About Leafmould**

- It's easy to make
- It cuts out bonfires
- It saves using peat
- It's free
- It's clean and easy to handle
- It's good for the soil
- It cuts down on watering
- It can be used on any soil
- It can be used at any time of year

### **Sources Of Supply**

Collect fallen leaves from your garden, and from pavements and verges of quiet streets. All sorts of autumn leaves can be used, including plane, beech, oak and horse-chestnut. All will

rot down, though some will take longer than others.

Your local council might deliver lorry-loads to allotments and other suitably-accessible sites. As they have to pay landfill charges for dumping them elsewhere, there should be no charge for deliveries. Ask for parks and cemetery leaves, rather than those from roads, which might contain unwanted contaminants.

*AH*

### ***Mobile Library***

#### **Ockeridge**

Silver Oaks 9.45–10.05

#### **Wichenford**

Malvern View 10.10–10.35

Church 10.45–11.05

Kings Green Farm 11.15–11.40

Rosses Green 11.45–12.05

#### **Martley Hillside**

Horn Lane Bungalows 12.10–12.25

#### **Martley**

Taylor's of Martley 12.30–12.45

#### **LUNCH**

Heaton House 1.20–1.50

Church 1.55–2.15

#### **Clifton**

Village Hall 2.30–3.50

The Mobile Library will be visiting these stops on Wednesdays on the dates listed below in 2010:

20 October    10 November

1 December    22 December

Any enquiries should be made to Stourport Library, Worcester Street, Stourport, Worcs DY13 8EH, tel: 01905 822722 [stourportmobile@worcestershire.gov.uk](mailto:stourportmobile@worcestershire.gov.uk)



# Church Words

The Rectory 01886 888664



As I mentioned last month, both Revd. Robert Barlow and Revd. Bruce Thomson will be leaving us for pastures new. This month we hear from Rob and next month from Bruce. I am sure what they have to say will be interesting for you to read and give you an idea of what they are going to do. Once again I thank them for their ministry amongst us and wish them every blessing.

*Reverend David Sherwin*

## **A new place to belong**

For the last six and a half years I've been Agricultural and Rural Chaplain for the diocese of Worcester with a job description saying that I'm "rooted" in the Martley group of parishes. Those roots have seen me perched on the top of Ankerdine Hill, almost on the boundary between Martley and Knightwick.

My work – I've described myself as a free-range vicar – has taken me into the communities, farms and rural organisations across Worcestershire and into Dudley as well. I have been in places and with people where vicars don't often get. It has been great fun and an enormous privilege.

In my work it has been important to have somewhere to come back to where I belong. What has helped me to belong has been leading services,

helping with the music, playing carols in the pubs, taking a part in the amateur dramatics, on the end of a rope with the bell-ringers, making the announcements at Martley Show. I've had a place to belong. Now I'm moving to a group of villages called Teme Valley South (which to add confusion is to the north-west of here!) which has six churches, Hanley William, Hanley Childe, Eastham, Rochford, Stoke Bliss and Kyre. I am looking forward to belonging there. We all need to belong to something or to someone or somewhere. We can belong through the things we do. We can belong through the place we live. We can belong to our families and friends. The Christian belief is that underpinning all our belonging to organisations, places or people we ultimately belong to God. He made us. In Jesus he redeemed (bought) us. We are His.

In my time here I have been grateful for a place and community to belong to. My hope for the future is with the people in Teme Valley South we may discover more of what it means to belong to God. With best wishes

*Robert Barlow*

## Services for October

Sun 3 Oct	8.00am Holy Communion, Knightwick Chapel 10.30am Harvest Service, St Laurence, Wichenford 10.30am Harvest Service, St Peter, Martley 6.30pm Harvest Service, St Mary Magdalene, Broadwas
Mon 4 Oct	9.00am Morning Prayer, St Laurence, Wichenford
Tue 5 Oct	10:00am Holy Communion, St Mary Magdalene, Broadwas
Wed 6 Oct	10:15am Morning Prayer, St Peter, Martley
Thu 7 Oct	9:00am Morning Prayer, St Laurence, Wichenford 11.30am Harvest Service at Nora Parsons Day Centre
Sun 10 Oct	8:00am Holy Communion, St Leonard, Cotheridge 10:30am Family Worship, St Laurence, Wichenford 10:30am Holy Communion, St Peter, Martley 10:30am Morning Prayer, St Mary Magdalene, Broadwas 6.30pm County Harvest Service at Worcester Cathedral
Mon 11 Oct	8.30am Prayer Breakfast with Jennifer
Tue 12 Oct	10:00am Morning Prayer, St Mary Magdalene, Broadwas
Wed 13 Oct	10:15 Holy Communion, Heaton House
Thu 14 Oct	9:00am Morning Prayer, St Laurence, Wichenford
Sun 17 Oct	8:00am Holy Communion, St Peter Martley 9:00am Matins, St Leonard, Cotheridge 10:30am Holy Communion, St Mary Magdalene, Broadwas 10:30am Morning Worship, St Peter Martley 3:00pm Harvest Festival, Knightwick Chapel 4:00pm Evening Worship, St Laurence Wichenford
Mon 18 Oct	9:00am Morning Prayer, St Peter, Martley
Tue 19 Oct	10:00am Holy Communion, St Mary Magdalene, Broadwas
Wed 20 Oct	10:15am Morning Prayer, St Peter, Martley
Thu 21 Oct	9:00am Morning Prayer, St Laurence, Wichenford
Sun 24 Oct	8:00am Holy Communion, St Mary Magdalene, Broadwas 9.30am Holy Communion, St Peter, Martley 10.30am Holy Communion, St Laurence, Wichenford 10.30am Family Worship, St Mary Magdalene, Broadwas 6:30pm Evening Worship, St Peter Martley
Mon 25 Oct	9:00am Morning Prayer, St Mary Magdalene, Broadwas
Tue 26 Oct	10am Morning Prayer, St Mary Magdalene, Broadwas
Wed 27 Oct	10.15am Holy Communion, Heaton House
Thu 28 Oct	9.00am Morning Prayer, St Laurence, Wichenford
Sun 31 Oct	10.30am Benefice Holy Communion St Mary Magdalene, Broadwas, Bruce And Margaret's farewell service followed by lunch together 3.00pm Memorial Service, St Peter, Martley



# Village Contacts



Editor of The Villager	Michelle Higgins editor@martley.org or 01886 888344 or leave articles at Martley Post Office
Advertise in The Villager	Aileen Parker—01886 888456
Church (Worcestershire West Rural Team)	<i>Rector:</i> Revd David Sherwin—01886 888664 or davidwin56@aol.com <i>Assistant Priest:</i> Revd Jennifer Whittaker—01886 833897
Martley Parish Council	<i>Chair:</i> Cllr. D Goodyear—01886 888423; <i>Clerk:</i> Sally Williams—01299 832949
Martley WI	<i>President:</i> Helen CoombeyJones—01886 888294
Martley & District Horticultural Society	Pam Minchin—01886 888521 or Margaret Jackson—01886 888654
Royal British Legion	Joyce Tyler—01886 821551
Martley Toddler Group	Will—01886 888340 or Jane—01886 888852
Martley Ramblers	Harry King—01886 888439
Martley Young Farmers	Lou Wickens—01886-812754 or Caroline Bullock—01905-333617
Path-or-Nones	John Nicklin—01886 888318 johnn@martley.org
Resource Centre	Alan Boon—01886 888527
Police “Surgery”	CSO Matt Smith 7184—Martley Local Policing Team Tenbury Wells Police Station extn. 3581
Martley Website	webmaster@martley.org
Martley Web Mesh	Richard Jackman—01886 821237 richard@martley.org John Layton—01886888460 johnl@martley.org Tom Pearsall—01886 888256 tom@martley.org
Martley Pre-School	Kath/Lucy—01886 889127 www.martleypreschool.co.uk
Martley Recreation Association (playing fields)	<i>Bookings</i> —Pat Owen 01886 888406 pat@owen01.fsnet.co.uk
Wichenford contacts for The Villager	Janet Andrews—01886 888303 or Sheila Richards—01886 888378
Kenswick & Wichenford Parish Council	Clerk—Shirley Sanders 01886 888302
Wichenford Wine Club	Chairman—Bill Hylan 01886 888431
Wichenford Local Heritage Group	Heather Rendall—01886 888239

To put organisation and its contact details on this list, or to change the details shown here, email editor@martley.org or leave a note for the editor at Martley Post Office.

# ***And finally ...***

## ***Born in the 1930's?***

First, we survived being born to mothers who smoked and drank while they carried us and lived in houses made of asbestos. Then after that trauma, our baby cots were covered with brightly-coloured lead-based paints.

We had no childproof lids on medicine bottles, doors or cabinets and when we rode our bikes, we had no helmets or shoes. We would ride in cars with no seat belts or air bags and stand up in the back peering over our parents' shoulders. We drank water from the garden hose.

Take-away food was fish and chips; no pizza , McDonalds , KFC, Subway or Nandos. Even though all the shops closed at 5.30pm and didn't open on the weekends and closed early one day a week, somehow we didn't starve to death! We could collect old drink bottles and cash them in at the corner store and buy gobstoppers, Bubble Gum and some bangers to blow up frogs with. We ate cupcakes, white bread and real butter and drank soft drinks with sugar in, but we weren't overweight because..... WE WERE ALWAYS OUTSIDE PLAYING!!

We would leave home in the morning and play all day, as long as we were back when the streetlights came on. No one was able to reach us all day. And we were O.K.

*More to come another month.*