

# The Villager

The community magazine for the  
parishes of Martley and Wichenford

Volume 16 No. 2

July 2007

**Editor: Andrew Chilvers** (01905 641986)

**Editorial Team:** *Martley:* Alan Boon (01886 888527), Nellie Bradley (01886 888339), Kate King (01886 888439), Beth Williams (01886 888273) *Wichenford:* Janet Andrews (01886 888303), Sheila Richards (01886 888378)

**Advertising:** Neil Stammers (01886 888513)

**Distribution:** *Martley* George & June Lawrence (01886 821064) *Wichenford* Bill & Jo Root (01886 888585)

**Contact The Villager:** leave articles at Martley Post Office, call Janet or Sheila (Wichenford) or email the Editor at [editor@martley.org.uk](mailto:editor@martley.org.uk)

*Opinions expressed by contributors are not necessarily those of The Villager. The Villager cannot be held responsible for any goods or services advertised in the magazine*

## ***Regular events in Martley and Wichenford:***

### **Sundays**

**2nd Sunday in the month:**

**Teme Valley Farmers Market for local produce** 11am The Talbot, Knightwick  
**Martley Ramblers** meet Church car park

**3rd Sunday in the month:**

**Walking Not Working with the Path-or-Nones.** Meet 9.30am Village Hall car park to help survey the footpaths

### **Mondays**

**1st Monday in the month:**

**Martley Parish Council** 8pm Memorial Hall

### **Tuesdays**

**Short Mat Bowling** 2.30pm Martley Memorial Hall (2pm winter months)

**Wichenford Ladies' Fellowship** 2.30pm  
2nd Tuesday in the month (usually)

### **Wednesdays**

**Teme Valley Shufflers Line Dancing**  
7pm Martley Memorial Hall.

**Enquiries:** Jeff and Thelma 01886 821772

**Martley Folk Club:** 1st Wednesday in the month at The Admiral Rodney

**Martley WI:** 2nd Wednesday in the month 7.30pm at Heaton House.

### **Thursdays**

**Wichenford Wine Club:** 3rd Thursday in the month

**Martley & District Horticultural Society:** last Thursday in the month  
7.30pm Martley Memorial Hall

**Weight Watchers**

6.30 pm - 7.30 pm Martley Memorial Hall

### **Other events:**

**Citizens Advice Bureau Teme Valley**

**Telephone Service:** Mon & Tue 10am—  
3pm Thu 10am— 7.30pm **Great Witley**

**& Knightwick Surgeries:** Weds 10am -  
4pm - by appt. 01584 810860

See Church Words for details of services

See articles inside for details of special events AND changes of times or dates of regular events

See the Diary page on  
[www.martley.org.uk](http://www.martley.org.uk) for a complete listing  
of all forthcoming events (that the Diary  
page Editor knows about)

***Articles to go in The Villager must be with the Editor by the 1st of the previous month***

# OUT AND ABOUT IN MARTLEY

Visit our website—[www.martley.org.uk](http://www.martley.org.uk)



## *Summertime*

July was named by the Roman senate in honour of Julius Ceasar, who was born on July 12.

The Anglo-Saxons called it Heymonath and Meadmonath after hay-making and the flowering meadows.

2007 marks 100 years since British Summer Time was first proposed. Changing the clocks for summertime is now an annual ritual in Britain and countries around the world.

The idea of summer time, or daylight saving time, was first suggested in a whimsical article by Benjamin Frank-

lin in 1784. In 1907 an Englishman, William Willett campaigned to advance clocks by 80 minutes, by four moves of 20 minutes at the beginning of the spring and summer months and to return to Greenwich Mean Time (GMT) in a similar manner in the autumn.

During the Second World War, double summer time (two hours in advance of GMT) was introduced and was used for the period when, normally ordinary summertime would have been in force.

## *Martley Spurs*

The 2006-2007 season is now well and truly over. Many congratulations must go to the Saturday Division side that not

only won the Saturday League Cup, even before they played their last game, but also won the eagerly sought-after Martley Cup. Their captain Richard Taylor lifted this after a hard fought game at St Georges Lane.



They finally overcame Upton Town when the first 90 minutes ended in a nil-nil draw, neither side netted in extra time and it all went to the dreaded penalty shoot out. The final score was 5-4 to the Spurs. The Sunday Premier side finished well up their League table, while the Reserves did not do so well.

The annual dinner and prize giving was held at The Crown Inn, Martley on 19 May where everyone had a really good time.

Good news too regarding the destiny of the Saturday League. There was some concern about there not being sufficient sides to make up this league that was founded 114 years ago. However, membership has slumped since the 1980s when there were five divisions to just one this last season. They now have 11 or 12 teams enrolled that the management consider sufficient to run a competition with each team playing the others in just one home and one away game, plus various cup matches.

*Beth Williams*

### ***Martley Ramblers***

*8 July Dudmaston 10am Church Car Park*

Sorry folks, about the many changes to the programme this year. These have been due to changes in personal circumstances of the various leaders and also to inclement weather. We promise to try to do better next year.

Recent walks around Upper Areley

and Clifton have been scenic and much enjoyed. This month Irene Walker will be leading us around the grounds of Dudmaston Hall, a National Trust property en route to Bridgnorth.

Irene says this is not a difficult walk with the last one-and-a-half miles along the Severn Way. Why not bring a picnic lunch or try a pub lunch, after the walk, at Lower Loade of Hampton, both good eating-places. NB: bring £1 for all day car parking ticket.



*Kate King*

### ***Martley WI***

*Wednesday 11 July, Heaton House.*

This is our last meeting before the summer break. Douglas Whittaker will be telling us of his time as a BBC Sound Engineer when he was travelling and staying at various venues around the country.

Some of us will be showing our age when we remember the years that Gardeners' World came from Clacks Farm and the years when Norwich City Football Club was successful in the various leagues before money ruled the roost. Bring husbands, partners, and friends. The competition is for an old cookery book.

Congratulations to all the members

who worked so hard on the entries for the spring rally. The co-operative entry was one of two highly commended entries, the subject being the 'Four Seasons'; this included top marks for Sheila Craker's minimalistic flower arrangement.

Individual entries were all well placed, including a highly commended medal for Pat Crook's decorative box. Well done everybody. What a lot of talented members we have.

*Kate King*

### ***Pudford Lane***

Welcome rain has helped to close the gaps in gardens and verges that appeared in various places following the prolonged dry spell.

The many and various birds are doing shuttle services from feeders to nestlings. Greater spotted woodpeckers have at least two nests on the premises and one was timed as being inside the nest for 28 seconds before returning for further supplies.

Pudford Poultry Enterprises are suffering from thieving magpies, egg-eating squirrels and rat visits. Metres of rabbit netting have been tacked around vulnerable barn areas and swinging flaps have been fitted over hatchways to laying boxes. Obviously the predators will soon find ways around or through the obstacles.

At the recent Church Fete, Dr Rob Stevens was one of the winners at the Splat the Rat competition. Maybe he should be approached on behalf of the poultry keepers to squash the squirrels,

mug the magpies and splat the rats.

Although the voluntary lay-bye operative is officially redundant, old habits die hard, and he finds it hard to bypass the continual daily deposits.

Recent finds included a new, unused and boxed greenhouse heater and the remains of a car service including rubber gloves, plus the usual alcohol cans and sandwiches and wrappings. Thanks to the lengthman for regularly removing the accumulated bags of rubbish.

PS: Please parish council could we have a bigger litter bin as the present one has to be emptied into bin bags every two or three days? (An Andyloo would also save embarrassment.)

*Kate King*

### ***Martley Old Grammar School Foundation***

A reminder to students under the age of 25 years who reside or who have a parent residing in the Parish of Martley, or who have at any time attended as a pupil at school in Martley and who are in need of financial assistance for further education, to apply for a grant application form.

This also applies to corporate organisations that may be eligible to obtain a grant. For information or an application form, please contact Mrs C Pear-sall, Secreatary MOSGF at Inglewood Hillside Martley Worcester WR6 6QW. Tel: 01886 888793.

Many Thanks  
Cheryl

## Summer fruit



### Raspberries

Raspberries probably originated in Eastern Asia and it was not until the 17th century that the fruit became popular. By the 18th century, cookery writers were devising recipes using the fruit for raspberry wine and vinegar, sweets and jams. Raspberries were also used as a cure for sore eyes and throats and to cleanse the teeth. Scotland is famous for its raspberry growing and in the late 1950s raspberries were taken from Scotland to Covent Garden on a steam train known as the Raspberry Special.

Raspberries are commercially grown for two main markets; the fresh market or for processing.

Raspberries were once regarded as a late summer crop, but now growers are using varieties and innovative growing methods to extend the season to provide this popular fruit for consumers from mid-April through to December.

Glasshouse raspberries produce the earliest and latest crops of fruit, but no single variety dominates the market since a combination of many varieties allows a consistent supply throughout the season.

### Strawberries

Strawberries were cultivated by the Romans as early as 200 BC.

In medieval times strawberries were regarded as an aphrodisiac and soup made of strawberries, borage and soured cream was traditionally served to newly weds at their wedding breakfast. In the 16th century, strawberries were sold in cone-shaped straw baskets, becoming one of the earliest packaged foods. Dr. William Butler originated the famous quote 'Doubtless God could have made a better berry, but doubtless God never did'.

The season begins mid-April with British glasshouse production. The plants are dormant until February when they are 'woken up' and prompted into growth with a little heat and supplementary lighting to fool the plants into thinking they are already into long warm days.

By early March the first flowers are emerging and by the second week of April the first fruits can be picked. The peak of production occurs from the end of April until mid-May. The same cycle begins again in late July/early August to enable the fruit to be harvested from mid-September.

By far the best known and most popular strawberry is Elsanta. It has excellent flavour, shelf life and quality and is an attractive glossy berry. Nearly 80% of the fruit found in supermarkets during the main British season will be the Elsanta variety.

## ***Thank you from Martley YFC***

Martley YFC held a Mouse Race Night at Martley Village Hall on 11th May 2007. All 125 people who attended had a great evening, even though the majority went home with lighter pockets!

Martley YFC would like to thank everyone who came and supported and thank the sponsors who were:- Kirby Property, Hillend Sawmills, Colin Griffiths Groundworks Ltd, Taylors of Martley, B S R Wickens, I & S Stoves & Rogers Coaches, Pencrofts, we are truly grateful for your generosity. The total raised was £1900.00. This money will be split between Martley YFC and County Air Ambulance.

*Thank you*



## ***Teme Valley Views***

*From the Teme Valley Children's Centre, special needs support group.*

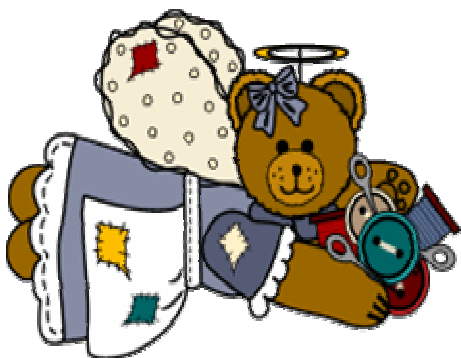
Are you concerned about your child and don't know where to look for help or support? As parents/carers we all worry about our children as we have their best interests at heart. However, sometimes it isn't easy and there is a need for support and guidance on how to encourage and assist children so that they can make the most of life's opportunities.

As a result, the Teme Valley Children's Centre would like to set up a Special Needs Support Group dedicated to providing support, information and assistance to parents/carers of children (from birth to 11 years of age) with special needs. This could be anything from Down's Syndrome, cerebral palsy or hearing or sight impairment to dyslexia, dyspraxia or attention deficit hyperactivity disorder (ADHD).

The aim of the Support Group is to provide a friendly ear and enable parents/carers to overcome feelings of

### ***Garden party***

Come to our two 'til six  
Sunday 1st July Gatepiece Cottage,  
Highfields,  
top of Barbers Lane  
Cream teas ~ yummy cakes ~ hot dogs  
Produce & posh bric a brac stalls  
Raffle ~ pin point the treasure  
Rare breed sheep  
Meet cider syd & Bulmer bill  
Kids fun tunnel  
Relaxing garden ~ Easy parking  
Entry £1-50 adults ~ 50p children  
All Funds In aid of St Paul's hostel for  
the homeless



### ***Pre-School Snippets***

During June and July the children will be exploring Food and Water. This includes discovering about food from other countries.

#### **Goodbye**

We would like to say goodbye to Liam Arnold, Harvey Bowen, Conor Burton, Chloe Cant, Jemma Corbett, Michael Davies, Harrison Gibbins, Mia John, Charlie Masters, Casper Mulcahy, Sam Pinches, Tori Powell, Oakley Roberts, Isabelle Steven, and Lucy Williams who all leave us this term to go off to BIG school. We would like to wish them the very best of luck.

#### **Hello!**

Hello to Zoe Geary and Rachel Cartwright who join us as qualified members of staff this term. Mary Griffiths has left us to concentrate on her family; she will, however, be coming in from time to time to cover staff holi-

day and sickness. We would like to say a very big thank you to her for everything she has done at Pre-School.

We have recently introduced a scheme where the Pre-School children borrow books from our collection and take them home in their very own 'book bag'.

The children are very proud of their 'school bags' and enjoy choosing books to read at home with their families. Research states that children become enthusiastic readers and writers when they have had pleasurable experiences with books with someone who is close to them.

The positive role model of a parent sharing reading as a relaxed and enjoyable activity is the best foundation for literacy development. With this in mind, the scheme will enable every child, no matter what their economic background to have these experiences.

Coming up this month at Pre-School: a trip to Wonderland and a Circus Skills workshop on the last day of term.

#### **Congratulations**

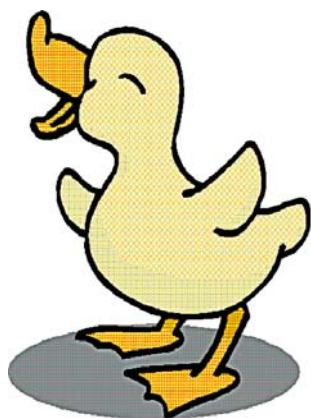
Congratulations Corner: Happy Birthday to Charlie Masters and Liam Arnold who both turn four this month. We hope you both have a special day! Also, congratulations to Isabelle Steven who is a big sister again.

*Sue Gibbins*

isolation. The group will offer advice and friendship and share relevant information and services that could best support you and your child.

If you would like to find out more about this new and exciting group, please contact, Joanna Morris on 01886 812982. Alternatively if you would like to talk in confidence please don't hesitate to contact Joanna on 07899 096 016 or email [Joanna.morris@temevalley-cc.org.uk](mailto:Joanna.morris@temevalley-cc.org.uk)

For any other information about the Children's Centre or to obtain a copy of our monthly newsletter, Teme Valley Views, please contact 01886 812982 or check out our website at [www.temevalley-cc.org.uk](http://www.temevalley-cc.org.uk).



### **Duck Race**

St Richard's Hospice is holding a duck race for the first time on the River Severn on **S a t u r d a y** 11th August at 2pm.

Ducks will race from Worcester Bridge to Worcester Cathedral. To make this a great success and to fill the river with a wonderful array of ducks – we need your help! Please could you purchase a duck and help us raise funds? Large ducks £5, small ones £3. OR a fabulous fancy dress/corporate duck (a limited edition of 8!)

for £25 – you can choose from 007 Duck , Lucky Duck – Hippy Duck-Demon Duck – Camouflage Duck – X ray duck – Safari Duck –

Love Heart Duck (yes honestly!).

Great prizes for the first three over the line. Call Tricia in fundraising on 01905 763963 to buy your duck, call into the hospice or one of our shops or fill out the form attached. Put the date in your diary to come along and watch this wonderful display! Side shows and events will also be taking place at South Quay as this event is part of the Worcester Festival – so come along with family and friends and help us go quackers for St Richard's!

### ***Pensax Thrift Shop***

Don't forget to support Pensax Thrift Shop on Wednesday morning 11th July for the sale in aid of the County Air Ambulance. Usual stalls plus tombola, and raffle.

### ***Martley's Past***

*Martley Parish Council – Annual Meeting, 28 April 1938.*

Chairman's Report on ARP

“The Chairman (Mr W Nott) reported he had attended a meeting by invitation of the Martley RDC, which was addressed by Mr Pope (County Officer for ARP). The Chairman, Mr Jacob, suggested all parishes should convene a parish meeting to ask for volunteers for the various offices in connection with Air Raid Precautions. Mr Nott stated that First Aid lectures were al-

ready being given at the Chantry Hall by Dr Green. After discussion it was proposed by Mr Pullen, seconded by Mr Hodgkins, 'that the Clerk find out on what dates one of the county officers could attend to address a Parish Meeting and that a meeting be called on such date as was convenient.' Carried. Mr Nott undertook to ask Capt Beviss-Bond to act as chairman for the parish meeting."

Apart from arranging scrap metal collection, the next reference in PC minutes to the war was on a meeting on 17 January 1941 where the following minute was recorded:

"Stirrup Pumps and Sand" – Mr Howlett asked whether Stirrup Pumps and sand for dealing with incendiary bombs were available for public use. The clerk mentioned that some months ago a load of sand had been deposited in the school playground." (!!!)

*A L Boon*

### ***More Pudford Lane***



A month in the life of a well-known wildflower meadow in Pudford Lane.

Background to this new, occasional series: This is an enclosure of 0.75 hectares of neutral

lowland grassland, originally belonging to Drogo, son of Poyntz, in 1086. There have only been five owners since up to the present day (making for interesting reading).

"Nature England" (previously "English Nature") think this land may have been un-ploughed and unfertilised for up to 300 years, with still one remnant of medieval ridge and furrow present. There is a spring flowing into a stream, dividing the site into two; one side is Lower Ludlow shale, the other is Silurian Wenlock shale. There are 30 varieties of hedging and trees and 154 varieties of herbage.

Probably you will see this, and us, on BBC1 TV in September/October 2007 – it's already 'in the can', and Alan Titchmarsh is rehearsing!

*Harry King*

### ***Services at Martley Post Office***

Services: Photo copying, faxing, laminating and DVD hire.

Film Processing: Photos from your memory cards, CDs, 35mm and APS films all processed within 24 hours and brought to you in partnership with Bromyard Post Office.

Advertising in the shop window for a small charge.

Items for purchase: Tobacco, wine, beer, a selection of spirits, soft drinks, sweets, crisps, ice cream, 35mm and APS films, disposable cameras, batteries, torches, lottery, scratch cards, greetings cards, post-cards, gifts by silver scenes.

## *Martley Primary School summer fete*



It was the best of days and the worst of days – when daddy took me to the summer fete at Martley Primary School. Best because there were lots and lots of games. I seemed to win every time, which meant that I ate lots and lots of sweeties all afternoon. Worst because it rained and I couldn't win any more games – and then my tummy hurt and daddy said it was because I ate too many sweeties..

As well as games like hook a duck and ping pong in the hole (I didn't win that one and the man said it was impossible to win. 'That's unfair,' my friend Drew said.). But I did score two goals against a big boy and won two lollipops. I also played cards, but I didn't win that either.

After this I told daddy that I was hungry and he bought Drew and me a hot-dog.

Then it started to rain. So we rushed inside and found a room where some children were having their faces painted. Lots of the girls had their faces painted like mice, but I had mine painted like a dragon, breathing fire with big teeth. I looked very fierce and even daddy was scared, or so he said.

After this we went into the hall where the Headteacher Mrs Davies and my teacher Mrs Jones were giving out prizes. There was lots of noise and people and I couldn't see the prizes because grown ups and big children crowded around expecting to win. Mrs Davies then shouted for everyone to sit down and be quiet and even the grown ups shut up and sat down.



Daddy thought that was very funny and said it was his favourite bit of the afternoon.

But by that time my tummy was hurting so I wanted to go home and watch Happy Feet on DVD. I promised daddy I would never eat so many sweeties ever again. He said that was a likely story and laughed. But I didn't think it was very funny.

*Myles Chilvers, aged 5*

## ***What's happening near you in July***

### **Quilts UK**

Venue: Three Counties Showground  
Email: [info@threecounties.co.uk](mailto:info@threecounties.co.uk)  
Phone: 01775 712100  
Website: [www.threecounties.co.uk](http://www.threecounties.co.uk)

### **Dance - Le Grande Cirque**

Venue: Malvern Theatres  
Phone: 01684 892277  
Website: [www.malvern-theatres.co.uk](http://www.malvern-theatres.co.uk)

### **Ledbury Poetry Festival**

Venue: Ledbury  
Phone: 0845 458 1743  
Website: [www.poetry-festival.com](http://www.poetry-festival.com)

### **Shelsley Walsh Hill Climb - National B & Vintage meetings**

Venue: Shelsley Walsh  
Phone: 01886 812211  
Website: [www.shelsley-walsh.co.uk/2007.htm](http://www.shelsley-walsh.co.uk/2007.htm)

### **WestFest Event - Race Night & Barbecue at the Lamb Inn - donation entry**

Venue: Lamb Inn West Malvern  
Phone: 01684 569391  
Website: [www.west-fest.com/](http://www.west-fest.com/)

### **Bands in the Park - Bell Inn Band from 2.30pm to 4.30pm**

Venue: Priory Park Bandstand  
Website: [www.thelocalchannel.co.uk/malverntown](http://www.thelocalchannel.co.uk/malverntown)

### **Charity Event - Acorn's Half**

### **Marathon**

Venue: Three Counties Showground  
Phone: 01386 554848  
Website: [www.malvernrun.org.uk](http://www.malvernrun.org.uk)

### **Witley Court Event - Behind the Scenes Tours - 3rd & 5th**

Venue: Witley Court  
Phone: 01299 896636  
Website: <http://tinyurl.co.uk/q7b2>

### **NT Event Croome Park - Damsels & Dragons Walk**

Venue: Croome Park  
Phone: 01905 371006  
Website: <http://tinyurl.co.uk/pci0>

### **Concert - Here Come the Proms! with the CBSO conducted by Carl Davis**

Venue: Malvern Theatres  
Phone: 01684 892277  
Website: [www.malvern-theatres.co.uk](http://www.malvern-theatres.co.uk)

### **NT Event Croome Park - 1940s Weekend**

Venue: Croome Park  
Phone: 01905 371006  
Website: <http://tinyurl.co.uk/pci0>

### **Haflinger Society Of Great Britain**

**Annual Breed Show** - You & Your Family are invited To Come & See These Beautiful Horses. Dressage-Showing-Jumping-Driving-Gymkhana- Handy Pony-Western. Free Admission-Free Parking  
Venue: Three Counties Showground  
Phone: 01684 584900

Website: <http://www.haflingersgb.com>

**Bands in the Park - Forest of Dean**

Brass from 2.30pm to 4.30pm

Venue: Priory Park Malvern

Website: [www.thelocalchannel.co.uk/malverntown](http://www.thelocalchannel.co.uk/malverntown)

**TR Register -**

Venue: Three Counties Showground

E-Mail: [info@threecounties.co.uk](mailto:info@threecounties.co.uk)

Phone: 01235 818866

Website: <http://www.tr-register.co.uk/>

**Upton Blues Festival -**

Venue: Upton Upon Severn

[info@uptonbluesfestival.org.uk](mailto:info@uptonbluesfestival.org.uk)

Phone: 01684 592146

Website:

[www.uptonbluesfestival.org.uk](http://www.uptonbluesfestival.org.uk)

**Eastnor: Romeo & Juliet - performed by Lord Chamberlain's Men**

Venue: Eastnor Castle, nr. Ledbury

E-Mail: [enquiries@eastnorcastle.com](mailto:enquiries@eastnorcastle.com)

Phone: 01531 633160

Website: [http://](http://www.eastnorcastle.com)

[www.eastnorcastle.com](http://www.eastnorcastle.com)

**Much Marcle Steam Rally -**

Venue: Much Marcle

Phone: 01531 660464

**Eastnor: Totally Natural - Bug Hunts & Nature Trails -**

Venue: Eastnor Castle, nr. Ledbury

E-Mail: [enquiries@eastnorcastle.com](mailto:enquiries@eastnorcastle.com)

Phone: 01531 633160

Website: [http://](http://www.eastnorcastle.com)

[www.eastnorcastle.com](http://www.eastnorcastle.com)

**Dance - Magic of the Dance - Irish****Dance Spectacular**

Venue: Malvern Theatres

Phone: 01684 892277

Website: <http://www.malvern-theatres.co.uk>

**Arab Horse Show -**

Venue: Three Counties Showground

E-Mail: [info@threecounties.co.uk](mailto:info@threecounties.co.uk)

Phone: 01672 520782

Website:

[www.arabhorsesociety.org.uk](http://www.arabhorsesociety.org.uk)

**Eastnor: Teddy Bear's Picnic -**

Venue: Eastnor Castle

E-Mail: [enquiries@eastnorcastle.com](mailto:enquiries@eastnorcastle.com)

Phone: 01531 633160

Website: [http://](http://www.eastnorcastle.com)

[www.eastnorcastle.com](http://www.eastnorcastle.com)

**Bands in the Park -**

Fusiliers Association (Lancashire)

Band from 2.30pm to 4.30pm

Venue: Priory Park Malvern

Website: [www.thelocalchannel.co.uk/malverntown](http://www.thelocalchannel.co.uk/malverntown)

**Martley Library**

Martley Village Hall, Berrow Green Road, Martley, WR66PQ.

Tel: 01886 888396

Opening hours

Mon 2.00-7.00

Wed 4.00-7.30

Thurs 10.00-1.00

Fri 2.00-4.00

Sat 10.00-12 noon



# Over the Garden Wall in Wichenford

## *Flower Rota*

1 July Janet Andrews  
8 July Sheila Richards  
15 July Barbara Whyatt  
22 July Anne Banks  
29 July Jo Root

## *PCC Meeting*

The Wichenford PCC Meeting will be held in the Memorial Hall on 16 July at 7.45pm

## *The Children's Society Boxes*

The sum of £141 was collected and sent off from box holders in Wichenford.

## *AGM Wichenford Church Council*

At the Annual Meeting of Wichenford Church Council, the Rev David Sherwin expressed sincere gratitude to all those in our community who voluntarily throughout the year do all the multiple tasks in and around the Church, which keeps it looking so spick and span and welcoming.

In addition the gifts in kind, unrecorded, are all very much appreciated.

## WICHENFORD NEEDS YOUR NEWS



Janet Andrews  
01886 888303  
Sheila Richards  
01886 888378

---

## *Ladies Fellowship*

The Ladies Fellowship holds monthly meetings. These meetings are held either in members' homes or at the Memorial Hall. New members are always welcome.

## *Kenswick and Wichneford Parish Council*

Edited minutes of the Annual Meeting of the Parish Council held on Monday 14th May 2007 in the Memorial Hall Wichenford.

Present: Mr D Stinton, Mrs J Panton, Mrs H Rendall, Mr A Chilvers, Mrs C Woodward, Mr K Randall, Mr M Andrews.

In Attendance: Mrs S Sanders (Clerk to the Parish Council).

The vice chairman welcomed every one to the meeting and in particular Mrs C Woodward.

## **Election of chairman**

The outgoing vice-chairman asked for

nominations from the floor for a chairman. No nominations were received and Cllr Randall was asked if he would like to take up this post. Cllr Randall agreed to accept this position and was proposed by D. Stinton and seconded by J Panton.

### **Election of vice chairman**

The chairman asked for nominations from the floor, and D Stinton was nominated by H Rendall. Mr Stinton agreed to stand as vice chairman for a short time. This was seconded by M Andrews.

### **Declaration of acceptance office**

All present signed the new Declaration of Acceptance of Office forms. Those that are absent will have the forms sent to them.

### **Democratic half hour/public question time.**

The chairman invited all present to ask questions or make statements about parish business.

### **Apologies and absence of approval**

Mr. N Oldfield (accepted) County Councillor A Davies, District Councillor B Williams.

### **Electin of representatives**

Memorial Hall Committee.

It was proposed by Cllr Panton to elect Cllr Randall and Stinton. This was seconded by Cllr Rendall.

### **Environmental Pollution Officer.**

Cllr Andrews was happy to be re-

elected to this post. Proposed by Cllr Rendall and seconded by Cllr Panton. Parish Path Wardens.

Mr J Wells is happy to continue as the PPW along with Cllr Rendall. Proposed by Cllr Randall and seconded by Cllr Stinton.

### **Snow and Flood Warden.**

Cllr Oldfield is happy to continue in this post. Proposed by Cllr Andrews, seconded by Cllr Rendall.

### **Worcestershire Calc Representative.**

Cllr Panton was proposed by Heather Rendall and seconded by Cllr Woodward.

### **Register of interest forms**

The forms were handed to councillors to complete and send off to the District Council.

### **Declaration of interest**

The clerk reminded every-one of the need to declare interests and to keep the book up to date. No interests were declared.

### **Minutes**

The clerk was asked to change the minute 07/37 on page 137 to read the decision was majority one cut a year.

The minutes of the meeting held on 30th April 2007 were accepted and signed as a true record.

### **Progress report**

Tree on village green.

A verbal quote of £400 and two further quotes of £500 and £160+ vat to

have it removed have been received. The council proposed to accept the lowest quote and contact the company to get it done ASAP.

Posts on Kings Green.

It was agreed at the meeting of 20th Feb 2006 that wooden posts could be erected on the green to prevent further damage by vehicles. Around 10 posts are needed and the council was asked if permission could be given to purchase the timber. It was agreed unanimously to allow the purchase of the required number of wooden posts.

### **Planning**

There were no planning items to discuss.

### **Finance**

The income/expenditure accounts remain the same as the meeting held on 30th April.

There were two cheques totaling £81.90 for agreement and signature.

### ***Mobile Library***

The mobile library visits Wichenford on the first Wednesday of every month. We do not want to lose it, so please use it.

Wichenford, Malvern View

10am-10.30am

Wichenford Church

10.35am-11am

Wichenford, Kings Green Farm

11.05am-11.35am

Wichenford, Rosses Green

11.40am-12.10pm

It was proposed to accept the finances.

### **Insurance review**

The insurance policy was examined at the meeting of 30th April. The clerk was asked to check if the policy included cover for volunteers.

### **Risk assessment**

The Annual Risk Assessment was studied and discussed. It was noted that the bus shelter wants cleaning out and re-coating. The dead tree on the village green will shortly be removed. It was proposed to accept and sign the risk assessment.

### **Code of conduct review**

The advice from MHDC is to wait for recommendations from the Standard Committee, which will be meeting on 5th June to consider the revisions to the code.

You are required to adopt the code within six months of the order being made; so by 1st October 2007. This item will be put on a future agenda.

### **Correspondence**

For decision by the parish council.

None.

### **For information only**

There was very little correspondence due to the parish council having a meeting two weeks ago. The three items of correspondence listed will be distributed in the folder for the next meeting.

### **Councillor's report and items for future agenda**

A letter was received from WCC explaining that it was not necessary to reduce the grant that our parish asked for. The cover letter is included in the file.

### **Date and venue of next meeting**

Meetings were arranged for; 9th July, 20th August, 1st October, 12th November, and 10th December 2007.

All will be held in the Memorial Hall, Wichenford at 7.30pm. Meeting closed at 9.05pm.

### ***Statue of Christ***



The final article on our series on St Peter's Martley is the statue of Christ, carved by Leslie Punter in 1976.

Leslie rescued a cedar tree blown down in a gale in Jan 1976 and took it home to his parent's garage where he carved the statue. He had never carved anything in wood prior to that.

It was for aesthetic reasons that Leslie carved Christ naked from the waist up. Also, and somewhat controversial at the time, Leslie gave his Jesus an obvious manhood protruding from his white gown. To counter this he left a

branch protruding by his toes to remind onlooker that the statue is simply wood and not an idol.

The articles about St Peter's published in the Villager were by kind permission of Jeremy Campbell Grant, whose book; *St Peter's Church, Martley*, a history, comprehensively documents the church. Also, all purchases of the book go to the church.

\*\*\*\*\*

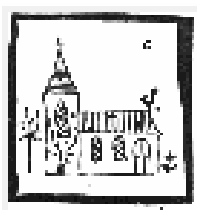
### **Church clock and cockerel**

You may have noticed the Cockerel has now returned to his perch after taking flight in January. He seems none the worse for wear and we are pleased to see him return. You may also wonder why the clock stopped recently. It was found to be due to a stone, which a bird had probably dropped, got lodged in the mechanism. Having removed the offending object it is now working again.

### **Welcome**

Welcome to Bruce and Margaret Thomson, our new Curate and his wife. We hope you will be very happy among us and know God's blessing upon you.

*Rev David Sherwin*



# Church Words

**The Rectory 01886 833897**

The Holiday season is here. Perhaps you have already been away or have yet to go. May I wish you a happy and refreshing time. Some people I talk to don't get away at all. I know in farming it is not always easy to get that well earned break, however much it is needed or wanted.

The word holiday comes from the term 'Holy Day', which was originally a special day for a religious observance or festival. Every culture has them; for example, Passover for the Jews, Eid for the Muslim, and Christmas for the Christian.

The summer holidays have always been a time when we have travelled to coastal regions to go for a paddle or into the countryside to enjoy the beauty around us.

Post War Britain enjoyed a growth in holidays such as those devised by Butlins and other holiday camps. In the 1970s the country enjoyed a boom in the 'package holiday' to many places, but particularly the Mediterranean. Now we have the world at our fingertips and can travel to exotic destinations all over the globe, from the Himalayas to an African Safari, or cruise around the world. The ultimate destination is space, which is already available to the super rich.

It seems a long way from the original intention for cultures and people to celebrate an important religious occasion, which was meant to enable us to enjoy rest from our usual labours, to enjoy food and drink we would not normally receive. All this to enable us to remember the Birth of Christ or his death or resurrection and so on.

These days would inspire and refresh the people, some would even make pilgrimages to Holy places and sites like Lindisfarne, Iona or Canterbury on these Isles or further abroad to Rome or Jerusalem. Deepening their spiritual life whilst on a 'holiday'.

I like to include within any holiday a trip to a holy place. It is not hard wherever you go to find a place of religious significance, the Greek Isles themselves or Malta contain places St. Paul visited, Turkey is the home to many a biblical place.

Whenever I do go to such a place of pilgrimage it inspires and refreshes me and can even deepen my faith.

May you find on your holiday this year something of the Holy and may you be inspired, refreshed and even challenged at what you find.

**Happy Holidays.**

*Rev David Sherwin*

## *Church Diary for July*

- Sunday 1 July      10.30am Ordination Service of Bruce Thomson  
                         in Worcester Cathedral  
                         4.00pm Holy Communion, St Laurence Wichenford
- Monday 2 July      9.00am Morning Prayer, St Laurence, Wichenford
- Tuesday 3 July      10.00am Holy Communion, St Mary Magdalene, Broadwas
- Wednesday 4 July      time Nora Parsons Day Centre AGM
- Thursday 5 July      2.00-3.30pm Pastoral Care Meeting at the home of Sue Ganderton
- Saturday 7 July      2.00pm Cotheridge Fete
- Sunday 8 July      8.00am Holy Communion, St Leonard, Cotheridge  
                         10.00am Family Worship, St Laurence, Wichenford  
                         11.00am Holy Communion, St Peter, Martley  
                         11.00am Morning Worship, St Mary Magdalene, Broadwas  
                         6.30pm Songs of Praise, St Laurence Wichenford
- Monday 9 July      8.30am Prayer Breakfast at the home of Jill Smith
- Wednesday 11 July      10.15am Holy Communion, Heaton House
- Thursday 12 July      2.00pm Little Minnows
- Sunday 15 July      8.00am Holy Communion, St Peter Martley  
                         11.00am Holy Communion, St Mary Magdalene, Broadwas  
                         11.00am Morning Worship, St Peter Martley  
                         3.00pm Evening Worship, Knightwick Chapel  
6.30pm Evening Worship, St Laurence Wichenford
- Monday 16 July      9.00am Morning Prayer, St Peter, Martley
- Tuesday 17 July      10.00am Holy Communion, St Mary Magdalene, Broadwas
- Wednesday 18 July      2.00pm Martley Primary School Leavers' Service, St Peter's Martley
- Sunday 22 July      8.00am Holy Communion, St Mary Magdalene, Broadwas  
                         9.30am Holy Communion, St Peter Martley  
                         11.00am Family Worship, St Mary Magdalene, Broadwas  
                         11.00am Holy Communion, St Laurence, Wichenford  
6.30pm Evening Worship, St Peter Martley
- Wednesday 25 July      10.15am, Holy Communion, Heaton House
- Thursday 26 July      12.00 Martley Mother's Union at Noumen, the home of Jenny Barton
- Sunday 29 July      10.30am Benefice Holy Communion, St Laurence Wichenford
- Monday 30 July      9.00am Morning Prayer, St Leonard Cotheridge

## ***Summer teasers***

### **Siestas**

Siestas are not a southern European invention. An afternoon sleep was common in northern Europe before the industrial revolution.

### **Garages**

While 53% of UK households have access to a garage, only 24% use them for parking cars.

### **Time**

The word "time" is the most common noun in the English language, according to the latest Oxford dictionary.

### **Confucius**

Confucius's proper name was Kong Zi, and all the world's three million Kongs are popularly supposed to be his descendants.

### **The moon**

Private individuals can buy up parts of the Moon thanks to a loophole in the 1967 United Nations Outer Space Treaty that simply forbade any government from claiming a celestial resource such as the Moon.

### **Clothing**

Good old gabardine is a rival to modern, synthetic mountaineering clothes - being lighter, hardwearing and water-resistant.

### **Tissues**

Kleenex tissues were originally used

as filters in gas masks.

### **Oliver Twist**

Oliver Twist is very popular in China, where its title is translated as Foggy City Orphan.

### **Shopping**

A laptop is bought every three minutes in the UK.

### **National debt**

Britain is still paying off debts that predate the Napoleonic wars because it's cheaper to do so than buy back the bonds on which they are based.

### **Apples**

Five billion apples are eaten a year in the UK.

**Erotomania** is the name of the condition in which a person holds a delusional belief that someone is in love with them

### **Ants**

The average life expectancy of an ant is 45-60 days.

### **Songs**

The song with the longest title is; 'I'm a Cranky Old Yank in a Clanky Old Tank on the Streets of Yokohama with my Honolulu Mama Doin' Those Beat-o, Beat-o Flat-On-My-Seat-o, Hirohito Blues' written by Hoagy Carmichael in 1943.

**Cats** can frighten a black bear to climb a tree.

## ***Village Contacts***



Editor of The Villager	Andrew Chilvers editor@martley.org.uk <i>or</i> 01905 641986 <i>or</i> leave articles at the Martley Post Office
Advertise in The Villager	Neil Stammers neil.stammers@btinternet.c om <i>or</i> 01886 888513
Church	Rector: Revd David Sherwin—01886 888664 Curate: Bruce Thompson —01886 833897
Martley Website	webmaster@martley.org.uk
Martley Parish Council	Chair: Dave Cropp—01886 888398; Clerk: Tom Pearsall—01886 888256
Martley WI	Gwynn Darby—01886 888490
Martley & Dist Hort. Soc.	Pam Minchin—01886 888521 <i>or</i> Margaret Jackson—01886 888654
Royal British Legion	Joyce Tyler—01886 821551
Martley Ramblers	Harry King—01886 888439
Wichenford contacts for The Villager	Janet Andrews—01886 888303, Sheila Richards— 01886 888378
Resource Centre	Alan Boon—01886 888527
Kenswick & Wichenford Parish Counl.	Clerk—Shirley Sanders 01886 888302
Wichenford Wine Club	Secretary—Mike Holmes 01905 641739
Trefoil Guild	geraldine.cooper@btopenw orld.com