

The Villager

The community magazine for the parishes of Martley and Wichenford

Volume 13 No. 7

December 2003

Editor: Michelle Higgins (01886 888344)
Editorial Team: *Martley:* Alan Boon (01886 888527, Nellie Bradley (01886 888339), Kate King (01886 888439), Beth Williams (01886 888273) *Wichenford:* Janet Andrews (01886 888303), Sheila Richards (01886 888378)
Advertising: Jim Sandison (01886 888393)
Distribution: *Martley* George & June Lawrence (01886 821064) *Wichenford* Bill & Jo Root (01886 888585)

Contact The Villager: leave articles at Martley Post Office or 1 Oxford View Wichenford or email the Editor at msh_47@yahoo.co.uk

Opinions expressed by contributors are not necessarily those of The Villager. The Villager cannot be held responsible for any goods or services advertised in the magazine

Diary

Regular events:

Teme Valley Shufflers Line Dancing

Weds 7pm Martley Memorial Hall.

Enquiries: Jeff and Thelma 01886 821772

Citizens Advice Bureau Teme Valley

Telephone Service Mon & Tue 10am—3pm

Thu 10am—7.30pm 01584 810860

Great Witley & Knightwick Surgeries Weds

10am -4pm - by appointment. Tel. 01584 810860

Short mat Bowling Tuesdays 2.30pm Martley Memorial Hall

Wichenford Local Heritage Group Evening

Classes—Wednesdays 7.30-9.30pm

For Church services, please see Church page

Mon 1 **Norah Parsons Day Centre Christmas Fair** 2pm
Martley Parish Council Meeting 8pm Memorial Hall

Fri 5 **Martley & District Horticultural Society Annual Dinner** 7pm Martley Memorial Village Hall

Sat 6 **African Drumming with Ayo Scott** 10-4pm and evening concert 7.30pm Little Witley Village Hall

Wed 10 **Martley WI: Christmas Meeting—open to all.** 7.30pm Martley Memorial Hall

Thu 11 **Wichenford Wine Club Christmas Celebration** 8pm Wichenford Memorial Hall

Fri 12 **Christmas (Partner) Whist Drive** with Christmas Fare prizes 8pm Wichenford Memorial Hall

Sun 14 **Teme Valley Farmers Market for local produce** 11am The Talbot, Knightwick

Fri 19 **School end of term**

Sat 20 **“Music of the Night” Christmas Celebration** 7.30pm Martley Memorial Village Hall

Wed 24 **Christmas Eve**

Thu 25 **Christmas Day**

Wed 31 **New Year’s Eve**



Articles to go in The Villager must be with the Editor by the 1st of the previous month



Martley Parish Council

An ordinary meeting of the Martley Parish Council was held on Monday 6 October 2003 at the Memorial Hall, Mr. D. Cropp, Chairman

Sergeant Kent outlined the responsibilities of his team of six officers at Tenbury Police Station. P.C. Hood is the Beat Manager at Tenbury and covers some 200 square miles. Officers reiterated the numbers to call, these are: 999 for all serious emergencies, 08457 444888 extn. 4544 for all other calls.

Mr. Cropp enquired about using, and funding for, proactive electronic information dissemination. Sergeant Kent confirmed that Tenbury has Special Constables and that a campaign to recruit in Martley might be funded by West Mercia Constabulary. An item in The Villager could test the possible response.

Matters Arising

Allotments: An item in The Villager is scheduled and it is hoped that a landowner will be persuaded to sell some land for this purpose.
Emergency Meeting Procedure: Will be carried forward to the next meeting.
Rubble on Hillside lay-by: Letter from MHDC they will sweep and check for potholes.
Kingwood Lane: Letter from MHDC they will inspect and rectify any dangerous defects.
F.P. 88 Clerk has written to WCC 11 Sept. requesting a reply. No reply received. Clerk to follow up again.

Parish Matters

B4204 Worcester Road suggested footpath from Taylor's yard and beyond Barbers; the clerk has written to MHDC who confirm that the records do not show any footpath.

District Councillor's Report

Mrs. B. Williams drew attention to a meeting about G.M. crops at Malvern Theatre. Elgar Housing will give opportunities to first time buyers such that the buyers obtain a 75% mortgage and Elgar fund the remaining 25% to be paid back when the property is sold; leaflets will be available later.

Parish Footpath Officer's Report

The Chairman discussed the path that runs near to what was Laughern House. It does not appear on the definitive map, but has been in use for some time. There is a need to establish custom and practice. Clarification is needed.

Planning

It was requested that The Clerk speak to the enforcement officer ref. Highnoon Hillside a collapsing extension. Treetops Bungalow Hillside: Application for a certificate of lawfulness for continued use of site without complying with condition 2 of 2143/81 (agricultural occupancy condition). Hillcrest 1 Collins Green-conservatory. Millennium Green Notice Board—returned application.

Decisions by MHDC. Applications granted: Gurnox Cottage Berrow Green (Riding Manege)—Granted with conditions

Finance

There were eight cheques totalling £1398.24 for agreement and signature:

Correspondence

Correspondence included the following: Crown Inn—licensing. WCALC “The Council as a Team”. Genetic Modification Public Meeting 8 Oct. Community Pride evening 20. Oct County Hall Quality Councils Conf. 30. Oct Wolverhampton. Bank of Ireland- identification of signatories. Parish Link Malcolm Rogers for Mr. Smith Ankers Hipplecote. Clerks gathering. Pro-forma for Website details of Councillors. Malvern Hills Citizens Advice Bureau AGM WCALC AGM 25. Oct County Hall. WCC FP 26 Confirmation Order. Lengthman’s mileage.

Councillors Reports and Future Agenda Items

Mr. Nott requested a follow-up on the sweeping of the recently surfaced lanes. Mr. Stammers and Mr. Coombe-Jones requested the Clerk to write to the Wichenford Clerk ref overhanging branches Ockeridge Lane. Mr. Coombe-Jones requested the Lengthman to inspect the dip in Prickley Green Lane regarding subsidence.

Mr. Taylor asked if the ownership of the plantation next to and to the rear of the weighbridge could be established so that it could be tidied up. Mr. Cropp said that something would be put in The Villager soon ref. dog fouling. The Lengthman’s mileage allowance

to be discussed

The next meeting is on Monday 3 November 2003.

Tom Pearsall

Parish Clerk 01886 888256

Basil Haines Memorial Fund

The fund was launched by an item in The Villager of November 2002 and over the twelve months following, some interesting comments and suggestions for the design of the proposed sundial have been left with us in St Peter’s Church. These are to be analysed and, early in 2004, the PCC intend to apply for the necessary faculty. The fund has reached almost £800. It might be possible to have the sundial made locally at far less cost than the original estimate. The main considerations are a high standard of materials and work, along with accurate measurements.

Dogs, Dogs, Dogs

A reader replies

I suggest that the Council does as others—provide special bins [for the disposal of dog mess] and for their frequent emptying and proper disposal of contents. Without them, imposition of a fine could be successfully resisted.

CV Wells

OUT AND ABOUT IN MARTLEY

Visit our website—www.martley.org.uk

Village of the Year

Martley won Worcestershire Village of the Year for 2003-2004 and since then we have gone on to be judged for the Regional Finals, where we were against winning villages from Hereford, Gloucester, Avonside, Somerset, Devon and Cornwall. A tall order!

We had to make a two hour presentation on the life and community in Martley. The morning started with BBC Hereford and Worcester broadcasting live from the centre of the village, before the four judges, and a representative from Calor, arrived. But everyone did us proud - including Jane at Martley Primary, Rev. David plus Colin, Jim, Tina and Gordon bellringing at St.Peter's, Richard in the Millennium Meadow, Tom hedging near the Village Hall, Helen at Central Store, and Mary at The Post Office, and Jack and Nellie at home. Many thanks to all of you for such an enthusiastic response and support for the qualities that make our Martley such a success. The judges seemed very impressed to have a "natural" presentation with real people; often they get sit-down hall presentations. The Calor rep said that one in the Isle of Wight lasted one-and-three quarter hours non stop. We will not know the final outcome

until 9 December, but of course any success will very much be icing-on-the cake - it's just a privilege to be able to celebrate Martley. Long may it continue!

*Dave Cropp
Parish Council Chair*

Parish Link

As of the end of November there is now a **Thursday** evening parish link service to and from Worcester, with the same timetable as Wednesday Friday and Saturday. There will also be a Christmas Evening run, and also a New Year's Eve run.

Please use the service - remember "use it or lose it" - we have had fewer passengers recently, and we want to continue the parish link into a new contract next year.



Martley WI

Wednesday 10 December

Come and join us for a little pre-Christmas jollification. Everyone welcome, you don't have to be female or be attached or connected to a member. We can promise warm

punch, some seasonal nibbles and guess what? Stupendous entertainment. Not the Calendar Girls, not even the Colander Girls, much more fun than that. Business meeting starts at 7.30pm, fun starts at 8pm.

The committee for 2004 is up and running and the programme is signed and sealed. Please join us. Why not make it one of your New Year resolutions to join us each month? Sadly, however, if you do decide to join, it has to be ladies only and no complaints, please, on grounds of sexual discrimination.

Kate King

Martley Ramblers

There is no ramble this month. Darkness descends too early and although we misplaced some members earlier in the year, it would be too careless to repeat it now.

The programme of events for next year has been drawn up and members will be circulated. Anyone else interested please watch this space or contact the Chairman on 01886-888439.

Kate King

Martley & District Horticultural Society

Despite the inclement weather that severely affected the support of members at the October meeting, a most interesting talk illustrated with slides, was given by Mr Ian Nex,

assisted by his wife. His subject was the growing of Bonsai. "How to get started and what you can achieve." A subject that turned out to be rather larger than envisaged by many people. Bonsai are looked at as being very miniature trees grown in containers as shown on various trade stands at shows. However with various ways of bark carving of larger trees there are a tremendous number of species that can be trained into Bonasi. Those present found this a very interesting subject and went away feeling that they could be experimenting with some of the trees growing in their gardens.

The Society's Annual Dinner will be held on Friday 5 December at 7pm for 7.30pm in Martley Memorial Village Hall. Anyone wishing to join us should give their names to the Society's Secretary Mrs J O'Leary by Wednesday 3 December please (Tel: 01886-888253). Meetings will continue during the winter months in Martley Memorial Village Hall on the last Thursday in the month beginning at 7.30pm, with interesting speakers. New members most welcome.

Nellie Bradley

Allotments Update

The Parish Council are seeking to respond to the clear demand that at least fifteen parishioners have for allotments. We hope to update you on progress in the new year.



Pudford Lane

Life proceeds fairly quietly in the wilds of Pudford. The lane surface is holding up well to tractors, general traffic and all the debris deposited by various animals. It is sad to see the last of the gloriously coloured leaves dropping. Barbara Williams has returned safely after her triumphant run in the London to Pamplona Classic Car Rally with Wiz Clift. Where are you going to keep all those trophies, Barbara?

Readers may be interested to hear of recent finds in the lay-by (which is not officially a lay-by but is a council facility). 2 spam and pickle rolls, 1 For Sale notice advertising Kenswick Manor, various bottles and cans, 1 shoe (the one-legged man must be around again), one bicycle, three Vauxhall wheel trims and a pheasant in a birch tree.

Kate King

The Parish Council and Charities

Every year the Parish Council is approached by local and national charities asking for support. Clearly we cannot respond to all of them, and at the same time we would be giving taxpayers' money raised by precept. In the past we have given either to support local charities, and/or those that might well be used by us in less fortunate times (such as Macmillan Nurses,

and The Nora Parsons Day Centre).

We would welcome views on this from any parishioner - please write to: The Clerk to the Parish Council, 6 Vernon Close WR6 6QX by 31 December 2003.

The Grub Club

Unfortunately not enough diners were around in October, but by the time of going to press we hope the Monsoon will have been graced by our presence at the end of November. No meeting December. January to be announced - possibly a wine-and-cheese evening; not yer ordinary cheese either!

Martley Spurs

Following the awful start to the new season, October saw the Spurs doing quite a bit better although no positive results were notched up on either the fourth or fifth of the month. Improvement came the following weekend when the Saturday Premier Division eleven beat Henwick Academicals 3 - 1 in their away-game and the Reserves overcame Worcester Juniors 2 -1, however the Sunday Premier side lost 2 -1 to Nelson.

The rot set in again over the following weekend, both Premier teams lost but this was compensated by a truly great win for the Reserves when Steve Smith and Pat Jinks both scored a pair to help beat Oakapple 5 - 0. The final Saturday of the month saw the Saturday Premier eleven draw three all with Upton Town, Scott Morris

bagging a couple of the goals. The Sunday Premier side did the same the next day by netting three to AFC Barbourne's three, a hat trick by Michael Fellows produced this result. The Spurs are sorry to announce that their annual Christmas Bingo will not be held this year owing to the renovation work being carried out on Heaton House. However, their annual Grand Draw will take place at the Crown Inn on Wednesday December the 17th. Tickets are available from all Club members. The Spurs wish every one of you a very happy Christmas.

Beth Williams

Trefoil guild

Arrangements were made at our October meeting to attend the County service at Pershore Abbey on the 30 November to celebrate the Trefoil Guilds Golden Jubilee.

We look forward to welcoming Heather Hill from Malvern who will talk to us about her "life in employment" with Baden Powell, this will be an open meeting at Clifton-on-Teme Scout & Guide hut on 25 November.

We shall celebrate Christmas at the Royal Oak, Broadwas, maybe Father Christmas will call !

Sue Ganderton.

Broadband in Martley

Following a visit from Charles Wood of Serv-iT in Worcester about Air-Band in Martley, Hopehouse Farm has

been chosen as the most suitable site for the main repeater link for the parish. It is planed to start installing Broadband equipment there around December. Their aim is to have broadband available to everyone in the village and surrounding area. Where difficulties occur they can piggyback from one subscriber up to three others. Plans are also going ahead to provide similar facilities in Hallow, which could cover Lower Broadheath and Abberley

Costs are comparable with BT (£19.99 per month) except for the initial equipment, which for a private individual, is £200. For business purposes costs can be claimed back via a government initiative. For more information, see www.martley.org.uk.

Wool required

I am knitting for a children's charity organisation and I would be very grateful if there is anyone who could spare their odd balls of wool no matter how small, as they will always be of some use. Please contact Mrs H Wilkins, 47 St Peters Drive, Martley (01886-888529). Thank you.

Answers to November crossword:

ACROSS: 1.MIRACLE 5.RISEN 8.RITES
9.SABBATH 10.LEAKAGE 11.ISLAM 12.LITANY
14.ASTHMA 17.TOPIC 19.PRELATE 22.RESPECT
23.EPHOD 24.YEARN 25.SPANNER
DOWN: 1.MORAL 2.RETRACT 3.COSTA 4.EASTER
5.RABBITS 6.STALL 7.NEHEMIA 12.LITURGY
13.NUCLEON 15.HEATHEN 16.SPITES 18.PASTA
20.ENEMA 21.ELDER



Over the Garden Wall in Wichenford

WICHENFORD NEEDS YOUR NEWS

From our very own Octogenarian



Janet Andrews
01886 888303
Sheila Richards
01886 888378

What a wonderful party – big family get-together – lovely atmosphere, also many old friends and the weather was perfect. I would like to thank all the people who gave contributions to the Acorns Children's Hospice Trust, which raised a grand total of £250. Also I would like to thank The Villager for the beautiful flowers and gift.

Bill Root

Wichenford Harvest Supper

The Harvest Supper was a great success, the hall was filled to capacity and everyone enjoyed a very happy evening. The delicious meal was prepared by Rosemary Clark and her helpers, we thank them all, and also all those who made the super apple tarts. Thanks to Jill Bedworth who arranged the entertainment, a conjurer who was amusing as well as skilful. Mrs Millie Pargeter, in her usual efficient way arranged the raffle prizes and Margaret Fisher sold the tickets – our thanks to them. Grateful thanks to William Banks who auctioned the cherry

Phone your Wichenford news to Janet or Sheila or leave articles at Martley Post Office or 1 Oxford View Wichenford

brandy and honey so kindly given by Mrs S Britten and Mervyn Mitchard. Also our thanks go to the kind donor of a weekend in Blackpool. The Raffle and the auction raised £500 towards the new audio-system for the Church. The bar, run by Mark Andrews and Heidi, made £96 for Hall funds.

Wichenford Ladies Fellowship

Our October meeting saw us enjoy Sister Desi Green's fund-raising walk on the Great Wall of China. Desi's vivid description and wonderful colour slides transported us from a village hall on an autumn day to the truly spectacular Great Wall of China. Make no mistake, it's a very demanding challenge and needs intensive training beforehand, to cope with the demands this makes physically and mentally. Our local

ladies who walked the wall for the Birmingham Cancer Research Campaign were Sister Desi Green, Mrs Barbara Williams and Mrs Sue Hoskins who showed great courage and determination. Desi also visited the site of the terracotta army at Xiang and brought along some beautiful mementoes of an unforgettable adventure.

Sister Green was warmly thanked by Mrs Elsie Whitehead and the Fellowship gave a donation to the Cancer Research Campaign in appreciation of a fascinating talk. Prayers were led at this meeting by Mrs Brenda Hadfield and Mrs Pam Webb was the Tea Hostess. Final plans were made for the Fellowship Whist Drive on 7 November in aid of the audio-system for Wichenford Church. Our December meeting will be held in the Memorial Hall at the slightly earlier time of 2pm and will be our Christmas gathering with hymns and readings – and a nice Christmas tea! We do welcome visitors and new members – how about it?

Christmas Whist Drive

Don't miss the Christmas Whist Drive! This special Christmas Whist Drive, with its super Christmas Fare prizes, will be held on Friday 12 December at 8pm in the Memorial Hall, Wichenford. It will be a Partner Whist Drive and all are welcome.

Get Well Wishes

Our very best wishes to Isabel Field – we hope that she will soon be fully recovered from her hip operation and back again with us in Wichenford.

Wichenford Church News

Church Altar Flowers

7 December Advent – no flowers
14 December Advent – no flowers
21 December Christmas decorations
28 December Christmas decorations

Christmas Services at St Laurence's Church, Wichenford

Sunday 14 December 10am All Age Christingle Service

Sunday 21 December 4 pm Carol Service

Christmas Eve 10pm Christmas Communion with Carols

Sunday 28 December 10.30am Benefice Holy Communion with Baptism

Our Christmas cards will give you all a reminder of the Service dates. As always, everyone is welcome to join in one or all the Services. The Church will be decorated with flowers, candles and a Christmas tree, so we do hope you will come and take away a message of hope to think about over the Christmas season. We look forward to seeing you.

Mrs Pam Webb and Mrs Carma Weatherall, Churchwardens.

Wichenford Church Audio-System

Thank you to all those very kind

people who donated prizes for the recent raffle at the Harvest Supper. Grateful thanks also go to Mrs Britten, Mrs Fryar and Mr Mitchard who donated items for auction. In all a grand total of £500 was raised which will go towards the church audio-system to be installed next year.

Millie Pargeter

Nora Parsons Day Centre

There is to be a Christmas Fair on Monday 1 December. The doors open at 2pm, when there will be groceries, cakes, home-made produce, Christmas wrapping paper for sale, and a raffle. Thank you to all who supported our bingo; we made £302 profit.

Wichenford Wine Club

Wichenford Wine Club will hold its annual Christmas Celebration meeting on the earlier-than-usual date of Thursday 11 December. Hosted by Bill and Barbara Mason, there will be a variety of surprises and tastings as well as snacks and goodies for everyone. All members welcome for the usual monthly fee of £5.

Meetings start at 8.00.p.m. in the Village Hall. Watch this space for our exciting 2004 programme.

Wichenford 100 Club

October winning number was 113. L Peplow won £110.

Millennium Green

Tidying and Inspection Rota
December: Eric Delahay.

Wichenford Local Heritage Group

Finds - Identification of 'finds'. Most of the 'finds' have now been identified by Victoria and we have some Roman and some Medieval pottery but less than expected. However, another flint artifact was identified as part of a Neolithic hand axe; we are sending this for further expert examination.

Dendro dating - Nigel Nayling. We have now received a 23-page draft report. Several of the timber cores taken have been dated but others cannot be dated probably because the timber came from pollarded trees and these cannot be dated at the present time. Cores taken from beams at Woodend and Woodhall Farms have been dated to the early 16th C. The trees for both buildings were felled around the same time in 1514. Timbers in some of the other buildings have also been dated.

Exhibition:

The exhibition in September turned out to be a great success and more than 200 people visited the hall to see the exhibits. We must record our thanks to Mary Hylan for all the work she put into organizing this event.

Maps - We have not made further progress yet with the tithe map project but understand that the Worcester

Records Office is developing a new procedure for making copies of very large old documents.

Geophysical Survey - The geophysical survey of the 'Roman' sites were carried out at Cockshoot on 21 - 22 August. A preliminary report has been received but the results are disappointing. The site is very 'ferric' and this interferes with the sensitivity of the magnetic detectors used to carry out the survey. There appear to be iron deposits on the site. We are now discussing with the archaeologists the possibility of digging a small trench early in the New Year to further explore the existence of a Roman site.

Evening Classes:

The evening classes are turning out to be a great success and attendance has been at least 30 people for each lecture. The workshop on Sat 25 Oct was also well attended. We also think that the two lecturers were impressed with the number of people attending and the informed level of the discussion.

Community Pride – Earlier this year we entered the Community Pride Competition organized each year by the Worcestershire County Council. On 20 October several members of the committee attended a ceremony at County Hall where we were surprised to learn that we had been short-listed. There had been 24 entries and there were nine finalists. We were pleased to be awarded 3rd place and were given a cheque for £200.

Mervyn Mitchard

Kenswick and Wichenford Parish Council

An Ordinary Meeting of the parish council held on Monday 6 October 2003 at 7.30pm at the Memorial Hall Wichenford.

REPORTS

The meeting was attended by 10 parishioners, the majority of whom wanted an update from the council regarding the use of our 'unclassified roads' by 4x4 vehicles. Councillor Rendall explained that on 7 October several councillors will attend a meeting at County Hall to see what the County Council intend to do, and a Traffic Regulation Order will be discussed. Kevin Oliver has taken over from David Goode and will be dealing with Rosses Lane and Guises Lane. They have set procedures to follow, but whatever happens, the Parish Council will be going ahead with a Traffic Regulation Order to stop any traffic as a temporary measure while it is being investigated.

Meadow view- several parishioners spoke to the parish council about the latest planning application for this site. The parish council explained that they will be making arrangements for a site visit.

County Councillor-B. Hickling reported that a system has been found for turning waste into recyclable fibre. A leaflet was given to the council to read.

Pot-Holes- The county council have purchased a 'jet-Patcher' at a reduced

price from Hampshire Council. This will enable highways to fill potholes more quickly and with a much better finish.

District Councillor Report. Councillor Williams reported that an open meeting is being held at Malvern on 15 October to discuss GM crops and advised people, especially farmers, to attend.

Elgar housing are helping first-time buyers by paying 25% of the mortgage while the purchaser pays 75%. An affordable housing workshop is being held on the 7 November. Mr .A. Saunders, the Housing Enabler for Worcestershire and employed by Community First, spoke about a housing needs survey for the parish. A "section 106" is put on the property which allows only part-buy and part-rent—the purchaser can buy up to 80% of property and when it is sold, it has to be sold to a local person. Occupation can be restricted to local people and restrictions can cover the whole parish. The most difficult thing is finding a site. Planning applications will need proof of a survey.

MATTERS ARISING.

Refuse Lorries. The clerk has written to Paul Bryon and has not had a reply. The clerk was asked to write to the district councillor and ask that this be dealt with as quickly as possible.

PLANNING

Decisions made by MHDC. (a) Re-building part of existing barn with new roof and brick skin & converting to form gymnasium at Colketts Farm -

granted. (b) Proposed extensions and alterations at The New House, Kings Green - passed. (c) Conversion of garage to study and new garage at Court Barn Kenswick - granted. (d) Demolition of existing WC block and coal shed. Single storey extension to rear, dining area extension to front. Interior alterations. Alterations to front garden for the Masons Arms - passed. (e) Conversion of implement store to form playroom and study at Midwest House Wichenford - granted. (f) Demolition of single storey flat roof extension and two storey extensions, for Cob Orchard ,Wichenford - granted. (g) Detached garage/storage building. Orchard Barn Wichenford - passed. (h) Amendment to existing approval to provide a total of 3 residential units for Allsett Farm, Broadwas - approved.

Applications received for comment. Free-standing portal building for Ridgend Farm - fully endorsed. Allsett Farm has put in an application to demolish the existing farmhouse and construct a replacement dwelling and garage. The parish council are not in favour of this application. The district councillor told the parish council that application 03/01080/ful for the extension of residential curtilage; demolition of double garage and replacement with triple garage at Mallenders Cottage has been passed.

FINANCE

The clerk was authorised to pay the sum of £141.00.

Parish Council vacancy. A vacancy

has occurred due to the resignation of councillor Mitchard. The clerk was asked to advertise the vacancy ready for co-option at the next parish council meeting.

Nora Parsons Day centre. The secretary of the Day Centre committee contacted the clerk to ask if the bottom branches of the oak tree at the entrance could be trimmed as they are obstructing the driveway.

Councillor Panton has been approached by residents from the cul-de-sac by the day centre who are unhappy about work that has been done in the gardens by people doing community service. They would like to have been informed.

Highways. The parish footpath officer is asking for volunteers for Kenswick and Wichenford Parish Pathfinders. If anyone is interested and would like to help maintain the footpaths please contact J.Wells on 01886 888459. The Parish map is being downloaded to a workable size. Councillor Wells has listed the tools needed and was given the go ahead to apply for a 'start-up' grant from the County Council.

The clerk will write to the County Council highways and ask for the 'SLOW' to be removed and placed on the correct road. She will also request the pot-holes and poor road surface at Kings Green are done. The County Council may not be able to find the budget to do the access across the green before the winter.

CORRESPONDENCE

Replacement Litter Bin. The parish

council has left it to the clerk to choose a replacement litter bin. The parish council will fit it.

Laugherne Valley Travel. Councillor Panton attended the meeting of 28 August and reported that things are going extremely well. She has filled out the form for her books of tickets and now has some to sell for £5.00 for 10 tickets but it seems passengers prefer to pay the driver at £1.00 a journey. The project is so successful that a Thursday evening service is being considered and a grant is being sought from the community council.

The next meeting is 16 October at Broadheath.

DATE AND VENUE OF NEXT MEETINGS

17 November 2003
5 January 2004
16 February 2004
29 March 2004



10 May 2004. Annual Meeting of the Parish Council.

All in the Memorial Hall Wichenford.

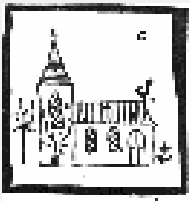
Shirley Sanders

Clerk to the Council (01886 888302)

Pub News

We are delighted to announce that due to the support and encouragement of local people, The Admiral Rodney has qualified to be in the 2004 Good Beer Guide and Good Pub Guide.

Gillian and Keith



Church Words

*'And you Martley in the land of Worcester
Are by no means least among the
Villages of Worcestershire'*

This little saying is certainly true of the village of Martley this year, being given the honour of village of the year. It's probable that many people have not heard of the village, or if they have their knowledge of it is limited, perhaps a lorry on the motorway saying 'Taylor's of Martley' is all they know. But for the area and us it is wonderful news.

This was true of another little village 2000 years ago, Bethlehem. A village, that then, no one really knew much about, except those who lived or came from there like Mary and Joseph. Yet amongst all the villages in Israel and Judah at the time of Christ's birth, it was Bethlehem that was chosen by God to be the place where the King of Kings would be born.

'And you Bethlehem in the land of Judah

Are by no means least among the rulers of Judah,

For from you shall come a ruler

Who is to shepherd my people Israel.'

Matthew 2:6

You may feel small and unimportant,

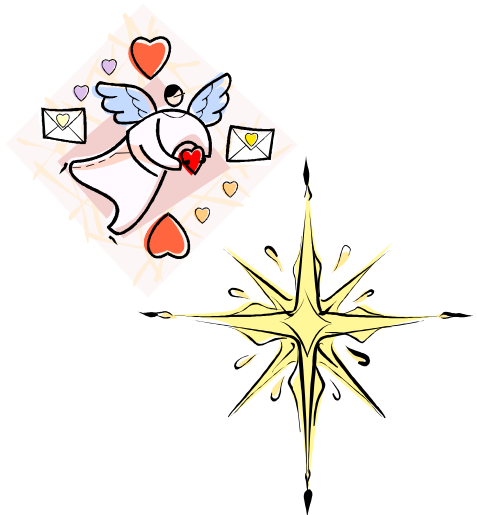
even insignificant in the scheme of things. Yet just as Christ came to Bethlehem and gave it importance and significance. In the same way the King of Kings chooses to come to us, and when he does, we find our true significance and importance in him.

A Happy Christmas and a Peaceful new year to you all

Rev. David Sherwin

Confirmation

If anyone is interested in confirmation or wishes to know what it involves please speak to Rev. David Sherwin 01886 888664



Services for December

7 December	
Wichenford	9.30am Holy Communion
Martley	11am Christingle Service
Broadwas	11am Morning Worship
Knightwick	8am Holy Communion
Cotheridge	6.30pm Evensong
14 December	
Wichenford	10.0am Christingle Service
Martley	11am Holy Communion
Broadwas	6.30pm Carol Service
Cotheridge	8am Holy Communion
21 December	
Wichenford	4pm Carol Service
Martley	8am Holy Communion 6.30pm Carol Service
Broadwas	11am Holy Communion
Cotheridge	9am Matins
Knightwick	4pm Christingle Service
24 December	Christmas Eve
Wichenford	10pm Holy Communion
Martley	11.30pm Holy Communion
Broadwas	5pm Crib Service 11.30pm Holy Communion
25 December	Christmas Day
Martley	11am Family Worship
Cotheridge	9am Holy Communion
28 December	
Wichenford	10.30am Benefice Holy Communion

In the Kitchen



A dessert we had at a Trefoil Guild supper was very popular, so I want to share it with you. Geraldine Cooper.

Red Fruit Compote

250g (8oz) sugar

300 ml (½ pint) water

500g (1lb) blackcurrants

Grated rind and juice of ½ orange

125g (4oz) strawberries

125g (4oz) blackberries

250g (8oz) raspberries

1 tablespoon arrowroot

2 tablespoons port

Place the sugar and water in a pan and heat gently, stirring until dissolved. Boil for a few minutes then add the blackcurrants and orange rind. Simmer gently for 15 minutes until soft. Strain the fruit, reserving the syrup. Place stewed and raw fruit in a serving dish. Return the syrup to the pan and bring to the boil. Mix the arrowroot with the orange juice and stir into the boiling syrup. Cook, stirring, until thickened and clear. Add the port and pour the sauce over the fruit. Cool and serve with the cremets.

Cremets

175g (6oz) curd cheese, 1 tablespoon caster sugar, 170 ml (6oz) double cream. Mix the cheese with the sugar, then gradually beat in the cream. Pile into a serving dish and chill. Serve with the fruit.

Christmas—four pages of activities, celebrations and how to survive

Christmas is coming

Christmas: that time of year that some of us love and others hate. Often it is a time when we have to associate with people that we don't really like and the "festive season" can end up as a time of arguments, dissatisfaction and falling-out. Here are some ways of dealing with this: get your mind-set right from the very beginning. Look at the Christmas period as a challenge to your self-development and work out strategies to ensure that at the end of it you have done your best to behave in a manner you are proud of. How good will you feel at the end if you have achieved this goal? Christmases often follow the same old routine. If you know that this creates problems and stresses, change the routine—routines are not cast in stone. Change the venue, change the timings, change the things you do. Visualise difficult situations and think through your behaviour and actions BEFORE the event. Think of the different scenarios that are likely to happen and, down to the last detail, plan how you will handle it in a calm, assertive manner. Repeat this visualisation exercise many times



until you feel comfortable with it.

Learn how to say no. If what is being asked of you is too much, tell the family. They are not mind-readers and may appreciate you opening up to them. Just remember to talk in a calm, assertive, but not confrontational or blaming, manner.

Remember that you can't rely on anyone else changing their behaviour but you can change how their behaviour affects you. If you know that somebody always makes you get angry or upset, change this emotion inside you—perhaps you could feel pity or curiosity at their behaviour. You have it in **your** power to control how **you** behave and

feel.

If the going is getting really tough, walk away from the situation. Go to another room and do some deep breathing or go for a brisk walk. You will come back refreshed and find it easier to cope. If all else fails and Christmas is a disaster learn from it. There is no disgrace in failure if you learn from the experience and ensure that it doesn't happen again. Let me know how you have got on. E:mail jennie@barnes1835.fsbusiness.co.uk

Jennie Barnes, Life Coach.

It's Panto Time Again

"The Monday Night Group" with Wichenford's resident dame and producer will be performing Humpty Dumpty at the Civic Centre Theatre, Stourport from 23-31 January 2004. A group from Wichenford ("the Monday Night Fan Club") is planning to go along on Friday 30 January. If you would like to join in (Oh yes you would!) and enjoy a fun-filled adventure in Pantoland, meeting Humpty and all his friends, please call Judy or Mike on 01886-888253. Tickets for our party will cost £6.50 adults, £5 for children and senior citizens.

Music of the Night Christmas Celebration

This is one for all of you, Saturday 20 December 7.30pm in the Village Hall - an evening of Christmas music, carols and songs, mulled wine and mince pies with "Music of the Night" who gave us a stunning show "From Broadway to The West End" last year. Ask anyone who has heard them - they are amazing and talented, and give out a really wonderful atmosphere as professional singers who just love entertaining their audience.

Tickets: £6.00 (£5.00 OAPs/children) from Dave Cropp or the Village Shops

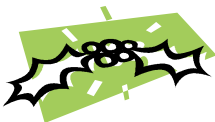
Lights of Love 2003

St Richard's Hospice, are launching the Lights of Love appeal for 2003. For a donation, a light will shine on the Christmas Tree in St Andrews Spire, Deansway, Worcester during November and December. The light may be to celebrate to give thanks.

The beautiful Church spire, which cradles the tree and will be floodlit at night, provides a lovely place to sit and reflect and the names of your loved one will be placed on the boards surrounding the tree. and in a book of thanksgiving in the Cathedral.

We are also holding a Service of Light this year. Peter Hopper, one of our volunteer Chaplains, has worked with Paul Swann the vicar at All Saints Church, Deansway to include a service at the church prior to the switching-on ceremony. The service will provide an opportunity to light a candle in memory of a loved one, to rejoice in a birth or to light a life of those absent at Christmas. Those attending the service will then walk by candle light to the tree for the switch-on. Afterwards, refreshments will be served in Spires Restaurant at Worcester College of Technology, courtesy of their catering team. Christmas

(Continued on page 25)



Politically Correct 12 Days of Christmas

On the 12th day of the Eurocentrically-imposed midwinter festival,
My Significant Other in a consenting adult, monogamous relationship
gave to me:

TWELVE males reclaiming their inner warrior through ritual drumming
ELEVEN pipers piping (plus the 18-member pit orchestra made up of
members in good standing of the Musicians Equity Union as called for in
their union contract even though they will not be asked to play a note),
TEN melanin-deprived testosterone-poisoned scions of the patriarchal
ruling class system leaping,

NINE persons of the female gender engaged in rhythmic self-expression,
EIGHT economically disadvantaged female persons stealing milk-
products from enslaved Bovine creatures,

SEVEN endangered swans swimming on government protected
wetlands,

SIX enslaved fowl producing stolen non-human animal products,

FIVE golden symbols of culturally sanctioned enforced domestic
incarceration, (*NOTE: after members of the Animal Liberation Front
threatened to throw red paint at my computer, the calling birds, French
hens and partridge have been reintroduced to their native habitat. To
avoid further Animal enslavement, the remaining gift
package has been revised.*)

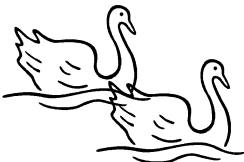
FOUR hours of recorded whale songs,

THREE deconstructionist poets,

TWO Sierra Club calendars printed on recycled processed tree carcasses
and...

ONE Spotted Owl activist chained to an old-growth pear tree.

Author unknown



(Continued from page 23)

holds many memories for us, this is a lovely way to remember special friends whilst helping those who are presently living with life threatening illnesses.

If you wish to sponsor a light please call Tricia or Charlotte, Fundraising Team, St Richards Hospice (01905 763963) for further information.

***Norah Parsons Day Centre
Christmas Fair
Mon 1 December 2pm
Groceries, cakes, home-made
produce, Christmas wrapping
paper for sale, and a raffle.***

**A day of African
drumming with
Ayodele Scott**



*here in the wilds of West
Worcestershire!*

**Little Witley Village Hall
Saturday 6 December
10am-4pm £25 for the day**

**Also an evening concert
7.30-11.30pm with Ayo and
workshop participants and one
or two guest performers.**

*This promises to be an exciting
and memorable event.*

**For more information, contact
Angie on 01886 888762 or
angiehill@supanet.com**

An eco-friendly alternative to Christmas Cards

Do you work in an office or belong to a community group? Why not use a Christmas card poster instead of sending a card to each other this year? For a donation you can write a message to your friends and colleagues. Save paper, save time and the money you save on many individual cards can be donated to St Richard's! For a poster or further information about this scheme call Tricia or Charlotte in the appeals team on 01905 763963



Barn Dance

**Saturday 31 January
Music by 'Wuster Waites' with
Eve Evans
Tickets - £6.00
to include supper**

Bar and raffle

**All profits from the evening will go
to Martley Village Hall
Tickets from Central Stores and
Martley Post Office**

**from 1 December
or from : Neil & Eileen Stammers
01886 888513 or
neil.stammers@btinternet.com
George and Helen Coombey-Jones
01886 888294**

In the Garden



Garden tips for December

As the year 2003 draws to a close, we look back at a summer to remember, with very hot days and precious little rain for many months. Some gardeners have experienced problems, particularly with cabbage white butterfly caterpillar, black fly, white fly, flea beetle and other insects that have multiplied in the heat of the summer sunshine and destroyed many plants. Brassica leaves have been left looking like lace, as all but the veins in

the leaves have been destroyed. And yet I have heard gardeners say that they have had a good season! Potatoes would appear to have done well. It has been a good harvest for onions, parsnips, carrots and red beet. Tomatoes have continued to ripen as we go into November, despite the frost that affected some areas.

This can be the odd-job month. Get the lawn mower serviced. Repair the gate and fences. Put a protective cover over the spring cabbage, broccoli, sprouts etc. to prevent the pigeons devouring them. Check apples, potatoes and other vegetables that you have in store for mice and rat damage. Sow onion seed in trays in the greenhouse, if you want to grow large onions. Check the geranium plants that were lifted and stored—they may need a fungi spray to prevent botrytis destroying them. The tubers of dahlias should be inspected for rot etc. Container grown roses, conifers and hedging plants can be planted this month. Rhubarb will need a covering of suitable material. Get plenty of manure incorporated into the soil.

Jack Bradley



QUARTER-PAGE ADVERT

For information about advertising or inserting flyers in The Villager, contact the Advertising Manager on 01886 888393 (Jim Sandison is currently in this role as a temporary measure).

To advertise on www.martley.org.uk, email webmaster@martley.org.uk.