

The Villager

The community magazine for the parishes of Martley and Wichenford

Volume 20 No. 3

August 2010

Editor: Michelle Higgins (01886888344)

Editorial Team: Martley Alan Boon (01886 888527), Kate King (01886 888439)

Wichenford Janet Andrews (01886 888303), Sheila Richards (01886 888378)

Advertising: Aileen Parker. 01886 888456

Distribution: Martley George & June Lawrence (01886 821064) Wichenford Karen Furber (01886 888449)

Contact The Villager: Leave articles at Martley Post Office, call Janet or Sheila (Wichenford) or email the Editor at editor@martley.org

Opinions expressed by contributors are not necessarily those of The Villager. The Villager cannot be held responsible for any goods or services advertised in the magazine.

Regular events in Martley and Wichenford:

Sundays

2nd Sunday in the month:

Teme Valley Farmers Market for local produce 11am The Talbot, Knightwick
Martley Ramblers meet Church car park

3rd Sunday in the month:

Path-or-Nones meet 9.30am Martley Memorial Hall car park to help maintain the local footpaths

Mondays

Rhythm Time: 9.30-11.30am Martley Memorial Hall Enq. Rachel 01886 812565

Martley Parish Council: 1st Monday in the month 8pm Memorial Hall

Martley & Villages Carers' Group: 1st

Monday in the month 10.30-12.30 Heaton House.

Tuesdays

Short Mat Bowling: 2.00pm Martley Memorial Hall

Wichenford Ladies' Fellowship: 2.30pm 2nd Tuesday in the month (usually)

Martley Toddler Group: 1st and 3rd Tuesdays (term time) 10.30am Martley Memorial Hall

Wednesdays

Teme Valley Shufflers Line Dancing: 7pm Martley Memorial Hall Enq. Jeff & Thelma 01886 821772

Martley Folk Club: 1st Wednesday in the month at The Talbot, Knightwick and 3rd Wednesday at The Admiral Rodney

Martley WI: 2nd Wednesday in the month 7.30pm Heaton House

Thursdays

Wichenford Wine Club: 3rd Thursday in the month

Martley & District Horticultural Society: last Thursday in the month 7.30pm Martley Memorial Hall

See Church Words p. 27 for details of services

See articles for details of special events AND changes of time/date/venue of regular events

See the Diary page on www.martley.org.uk for a complete listing of all forthcoming events (that the Diary page editor knows about)

See page 28 for contact details of organisations

Articles to go in The Villager must be submitted by the 1st of the previous month

Records of the Parish Council meetings in the two parishes are not intended to be full and complete minutes. Minutes of meetings can be seen by contacting the respective Clerks to the Councils.

OUT AND ABOUT IN MARTLEY

Visit our website—www.martley.org.uk



Martley Show And Fete

Saturday 21 August, on the playing field.

Village Hall News

The committee is sad to announced that Ann Amos has resigned from the management committee and we'd like thank her for all her support over many years together with husband Ken who always kindly helped out at events - usually washing up in the kitchen. Many thanks to you both.

Fundraising

The Ascot night raised £220.00 - not only did the horses race there was also a pig race, which caused much laughter.

Date for your diary - there will be a Table Top sale on Sunday 31 October 2pm - 4pm (£10 a table): there will be more of this next month.

Winning Photo - the committee would like to thank everyone who submitted their wonderful photographs of local scenes. We are happy to say that the winner on this occasion is George Coombey-Jones with his very atmospheric photo "Ploughed Field" The photo will be displayed in the hall

shortly, and some of you might already have seen it on the Martley website.

Martley 100 Club

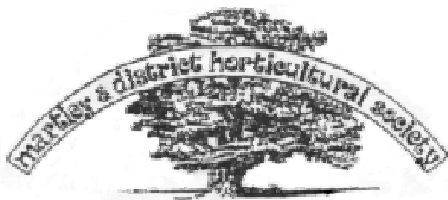
Two draws in June - congratulations to both: £60.00 to Mr Simon Honeybourne (number 46) and £30.00 to Janet Jones (number 26).

Annette Smith, Secretary

Lunch in Aid of Help for Heroes

There is to be luncheon on Monday 30 August in aid of Help for Heroes at Baldwins, Shelsley Beauchamp (by kind permission of Mr & Mrs David Moore) 12.30 to 3pm. Tickets are £30 each to include pre-lunch drinks and a three course lunch. There will be a fully-licensed cash bar. Individual tickets will be available or tables of ten, from Michael Timmis, The Manor, Shelsley Beauchamp WR6 6RE, e-mail mtimmis@airpost.net, cheques made payable to SB H4H.





Martley & District Horticultural Society

It was a perfect summer evening for the Society's visit to Broadheath Allotments on 24 June. The land is situated very close to the centre of the village and has been used for this purpose for many years. It is owned by the Parish Council. There are 40 plots, most getting plenty of sun and there is a happy atmosphere among the holders. Members wandered along the mown tracks and pathways between the plots, where they saw all sorts of vegetables, flowers, herbs, soft fruit and young and mature fruit trees. There are greenhouses and poly-tunnels containing tomatoes and many of the less hardy plants. A lot of composting goes on, and manure is delivered in bulk at times. Members then settled down for the meeting on Dave Cropp's plot – Dave being vice-chairman and host for the evening. He showed specimens of Elephant Garlic, Kohl Rabi etc, and told us how to grow and cook them, also gave advice on fast-growing Worcester Berry shrubs and how to make comfrey 'tea' (liquid fertiliser) and reported that his Kiwi fruit plant had sailed through the 16 degrees below frost of



last winter and is still thriving! The strawberries and cream went down a treat (as expected!), various gardening topics were discussed and it was decided that all should donate £1 each to the National Allotments Association. Chairman Mike Dunnett said how well the Plant Sale in May had done. We all enjoyed the evening and Mike said what a credit the allotments are to their holders. A special thanks to Dave for all his hard work.

Schedules for the Flower and Produce part of the Village Show and Fete on 21 August should be available from Central Stores about 1 August.

Tina Steele

Martley Writer Publishes Her Poetry

Martley writer Jenny Hope has just had her first poetry collection, "Petrolhead" published by Oversteps Books, Devon. "Petrolhead" is available from many retail outlets including Martley Post Office; Books, Books, Books, Tenbury Wells and Waterstones Bookshops, Worcester.

In addition, Jenny will be reading with another local poet, Sarah James from Droitwich ("Into the Yell", Circaidy Gregory), on Wednesday 18 August 2010 as part of the Worcester Festival. The reading is to raise money for the Worcestershire Breast Unit appeal and will take place at the Farrier's Arms, Fish Street, Worcester from 7.30pm. There is also an Open Mic as part of

the same event where guests can read their own poems. Free entry but donations to the Worcestershire Breast Unit Campaign please. £1 from every copy of “Petrolhead” and “Into the Yell” sold on the night will be donated to the campaign.

Stay Beach Safe!

News from the Teme Valley Children’s Centre

Like many people, you might be planning to visit the seaside during August. With more people using the sea and beach for pleasure than ever before, the demands placed on RNLI (Royal National Lifeboat Institution) crews and lifeguards have never been greater. The RNLI believes firmly that providing a first-class beach safety service helps to keep as many people as possible safe.

You are 500 times less likely to drown at a beach patrolled by lifeguards than you are at a beach with no lifeguards. The Beach safety summer campaign encourages people to swim at lifeguarded beaches, making sure they and their families have safer and more enjoyable days out. The aim of the RNLI is to save lives by changing attitudes and behaviours towards beach safety.

Top tips to stay safe:

- Wherever possible, always swim at a lifeguarded beach. Go to www.goodbeachguide.co.uk to search for listings throughout the UK and Republic of Ireland.
- Always read and obey the safety signs, usually found at the entrance

to the beach.

- When on a lifeguarded beach, find the red and yellow flags and always swim or body board between them – this area is patrolled by lifeguards.
- Never swim alone.
- If you get into trouble stick your hand in the air and shout for help.
- If you see someone in difficulty, never attempt a rescue. Tell a lifeguard, or, if you can't see a lifeguard, call 999 or 112 and ask for the Coastguard.

For more information about staying safe on the beach please ring the Children’s Centre on 01886 812982 or see www.rnli.org.uk

Irresponsible Disposal of Dog Waste

A resident of Nash Close has informed The Villager and the Parish Clerk of incidents of irresponsible behaviour and asked if they could be publicised in the hope of causing the offences to stop. A carrier bag containing dog poop was put in the conifer hedge at the bottom of a garden that runs parallel to an alleyway, on more than one occasion. The resident is furious that dog owners are fouling their garden with dog waste. A photo suggests it is the same person on each occasion as the bags are the same.

Residents of Martely are reminded that Martely is a poop-scoop area and thus it is a fineable offence to dispose of dog waste in this way.

Reading Group

A small, friendly reading group in the Martley/Wichenford area is looking for new members starting from September. We meet every six weeks



or so in the evening to discuss books chosen in turn by each member. Here are a few examples of contemporary and classic fiction

discussed: *Small Island* - Andea Levy, *Fathers and Sons* - Turgenev, *The tenderness of Wolves* - Stef Penney, *Bleak House* - Dickens, *Life of Pi* - Yann Martel, *Old Wives Tale* - Arnold Bennett. Please ring Cheryl Pearsall for more details. Tel 01886 888793



Martley Amateur Dramatics

As you may have read in last month's issue of *The Villager*, "Esther" was a great success. I didn't know we had such talented people in Martley!.

Perhaps because it was an unknown new production and a musical, our attendances were down on previous productions. However, if you were disappointed to have missed it you may have a chance to see it performed at the Cathedral. We are hoping to do a one-off performance on 26 February 2011. Watch this space!

Rehearsals for our next production, *The Importance of Being Earnest*, are

well under way as this is to be performed on Friday 24 and Saturday 25 September. For a change, the Saturday matinee is to be performed out of doors at The Hunters Lodge, Sinton Green. Tickets available as usual at the Post Office and Admiral Rodney.

Mad Kidz summer school for 8-14 year olds commences Monday 16 August to Friday 27 August 9am - 1pm £6 per day. It is hoped the professional theatre group *Vamos* will run a workshop on one of the mornings and the school will finish with a free performance for family and friends. Anyone interested please contact Louise, E mail: Louisa.j.wilde@gmail.com

Our pantomime this year will be *Dick Whittington* and auditions will take place 27 September. Look forward to seeing you once again.

Janet Eggleton

Martley Old Grammar School Foundation

Students who went to the Martley schools may be eligible for a grant to help with items purchased for their course. For more information and an application form, please contact Cheryl Pearsall on 01886 888793.

Help—Martley Website

Do you have good communication skills? Can you work as part of a team? Do you know a bit about how web pages are put together (we use Dreamweaver)? If you fit this "job description" and have a couple of

hours a month available, you might be just the person to help update and maintain the Martley website. If you think you might be able to help with this valuable, voluntary service to our community, contact any of the people listed for Martley Web Mesh on page 28. We look forward to hearing from you.

M Higgins



Martley WI

This year the weather was kind for our garden meeting at Stoneybridge House and we were able to enjoy looking around Reg's lovely garden. After supper indoors, we had our fun auction, which is our main fund-raiser and raised about £120. Many thanks to Reg for making us so welcome.

We don't have a formal meeting this month, but are planning a walk around Worcester, having been inspired by the recent talk by Sandy Gale. Please bring along cakes, preserves and any other goodies for our stall at the Horticultural Show on 21 August, and come along and support us.

Kate King

Martley Ramblers

Sundat 8 August 10am

Church car park

After some problems with blocked paths and impassable stiles, not to mention the leaders getting extremely wet beforehand when planning the

walk, the walk around Wichenford was very pleasant. Harry King met the Wichenford Footpaths Warden the following week and between them they sorted out a lot of the problems. Once again, we were lucky for our summer evening ramble along the Worcestershire Way and Shelsley Beauchamp – dry underfoot and very far-reaching views. This month is to be a morning walk – start time 10am, leaders Dot and Chris Fletcher (and Monty).

Kate King

Pudford Lane

Guess what? We've been done again! No, not burgled or beaten up, but more patches of road have been re-surfaced, some still to be done. Watch this space for more boring highways reports! SSSI news. Orchid numbers in the various sites in the lane have been good this year. Our twayblades, common spotted and pyramidal have all been amazing, in spite of some fears after the wet summer last year. No bee orchids so far, but that may be because Jacob donkey has a taste for them and could have got there first. He has had to be shut into the barn for most of the 24 hours due to colic and laminitis, but has been very good and shares his barn with a nesting pair of swallows, who have raised two babies. They happily twitter and flutter around him but woe-betide we humans when we go in. We are dive-bombed and screamed at. We certainly know our position on the ladder of importance.

Kate King

Martley Parish Council

Unapproved, edited draft record of the meeting held on Monday 7 June 2010 At The Memorial Hall.

The Democratic Period/Public Question Time

Parishioners present queried the map, plate for the milestone and the pot hole at Paynes Bank.

Minutes:

The minutes for the Annual Parish Council meeting and the Annual Parish meeting were both approved as true records of the meetings.

Councillor vacancy applications:

Mr Clarke of Newtown was co-opted as a new Councillor.

Progress reports:

(a) The Clerk: Worcester Highways are now looking into the graffiti on the Hillside sign. MHDC Environmental Services are to investigate the obstruction to Martley 773 route. The Clerk has contacted Highways with an urgent request for a street cleaner for the centre of Martley to help move and take away the recently-deposited mud. MHDC Business Rates Team will confirm which businesses are now eligible for discretionary rural rate relief and explain why the criterion has changed for 2010/2011. The Clerk has encountered some confusion as to which agency authorises the cycle events.

(b) Lengthsman: The Lengthsman has helped clear the mud from the centre of the village. The lengthsman's contract will roll for a further three months until the end of September 2010. The lengthsman will be asked to

cut the grass at the end of Pudford Lane and Horn Lane. Work has started on clearing the footpath from the Referral Unit to the village.

(c) Weighbridge: The work on the weighbridge is almost complete. The Clerk will arrange a three-year contract with E-On.

(d) Speed signs: Worcester County Council has asked that Martley PC do not purchase a VAS until the speed limit review is completed.

District and County Councillors' reports:

District Cllr Williams noted that only one parishioner was present at the annual parish meeting, which was disappointing. Cllr Williams reported that she had been elected onto the Executive committee as portfolio holder for Economic Development, which covers children and young people, community safety, concessionary fares, economic development, economic prosperity, emergency planning, leisure and culture, old people and tourism. She also reported that Worcestershire County Council and Herefordshire Council are offering residents the chance to get discounted compost bins delivered direct to their front door. *(Please see <http://hw.getcomposting.com> and page ???? for details).* The South Worcestershire Joint Core Strategy (SWJCS): in May 2010, following the introduction of the new government structure, it was announced that local councils could decide how many houses to accommodate, rather than work to

meet a government target. Malvern Hills District Council will now be using information collected through on the SWJCS to draw up our own local development plan, together with parish councils and residents, and will work out where affordable homes are most needed and then ensure that any additional developments take into account key issues such as road links and the need for local amenities. The last quarterly performance report included: 91 affordable homes were provided – this is way and above our initial target of 50, 55 volunteers gave 420 hours of support through the Step into Sport programme, our recycling rate is now 28.1%, 1900 households have taken part in the green garden waste scheme – surpassing our target of 1750, MHDC is in the top 20% of all councils for value for money and residents satisfaction.

Planning:

New

10/00674/R3C Martley Pupil Referral Unit – Retention of double mobile.

10/00678/OUT The Crown – Outline application for up to 49 dwellings (21 affordable). Consultation initiated today on MHDC website so a response is expected by 28/06/2010. PC will meet to pen a response before 28/06/2010.

Pending

10/00501/HOU New House Farm, Hope House Lane – Refurbishment of former dwelling to form ancillary living accommodation.

10/00455/FUL Hawksnest Barn, Easinghope Lane – Reconstruction of

earth dam.

10/00262/FUL Brook Court, Martley – Retention of lake dam and relief channel. Provision of new footbridge for public right of way over Laughern Brook.

10/00571/CCO Rodge Hill Farm – Condition 6 of previous application.

10/00581/CCO Rodge Hill Farm – Condition 6 of previous application.

Withdrawn by applicant

10/00357/HOU Black Hames, Hillside – Erection of garage with home office in roof space.

Permitted

10/00431/LBC The Coach House, Lingens Farm – Convert barn to dwelling.

10/00334/FUL The Coach House, Lingens Farm – Proposed barn conversion.

Refused

There were no refusals.

Finance:

The Parish Council will not be supporting the application from the Post Office for Rural Rate Relief this year.

Councillors reports and items for future agenda:

The Clerk is to contact Highways regarding the overhanging tree on the opposite side of the road to Martley Court and regarding the double white lines on Prickley Green leading to the right and not the left and the surface dressing not covering the surface. The Clerk is to speak to Festival Housing regarding Vale's contract within the village to see if the grass should be picked up and whether it covers

weather conditions. The Clerk is to arrange for a reminder in The Villager that parking on pavements causes unnecessary dangers. The Clerk is to write to Yarrantons Coaches asking them to be mindful of how they position the coaches when parking them in the lay-by on Hillside.

Date of next meeting:

Meetings are held on the first Monday of the month (Bank Holidays excepted).

Martley's Past

Copy of HMI's Report Year Ending 31 January 1903.

Boys School. The boys show proficiency in Geography, History and knowledge of Common Objects. Other subjects are taught with very fair success, but some of the scholars in the first standard appear to have been backward at time of admission (from infants – ALB). The discipline is very satisfactory. The syllabus and records of progress should be more detailed.

The Managers' attention is again directed (a) to the insufficiency of the staff in the boys' and girls' departments considering the number of classes to be taught, and (b) to the absence of inlet and outlet ventilation in these schools. The lighting in the boys' room is unsatisfactory. These defects should be remedied at once. I am directed to inquire the intentions of the Managers as to the remedying the defects in the premises referred to by the Inspector in his report. The special attention of the Managers is requested to the enclosed Form 69.

Signed – John P Hastings
(Correspondent) and H Humpherson,
Cert Master.

Note: April 18 1904.

“Re-opened school after 3 week Easter Holiday.” “The windows have been enlarged, the room ventilated and new stoves supplied. The schoolroom is thereby greatly improved.” Signed –
Rev J F Hastings.

A L Boon

**Martley Harvest
Celebration 2010**

Saturday 2 October 2010

7.00 pm

At Martley Village Hall



Tickets:
Adult £7.50
Primary-Age
Child £5.00

Martley Library Opening Times

Monday 2—7 pm
Wednesday 4—6 pm
Thursday 10am -1 pm
Friday 2 - 4 pm
Saturday 10am -12 noon
01886 888396 (opening hours only)



Over the Garden Wall in Wichenford

WICHENFORD NEEDS YOUR NEWS

Janet Andrews
01886 888303
Sheila Richards
01886 888378



Church Flowers

1 August Mrs M Thompson
8 August A A W
15 August Mrs Whyatt
22 August Mrs Wetherall
29 August MP Service at Wichenford

What is growing in Wichenford?

Some of you may have seen a new building going up in Wichenford (on the Martley-Worcester road) and wondered what it is: well it's a building for use by the whole community. From the end of July, Cob House is opening its new disabled-accessible Teaching Centre, Shop and Café. There will be buffet breakfasts



and carvery lunches and everyone's welcome. Opening times are Saturday and Sunday 7.30am to 5pm and Monday to Friday 8am to 5pm.

What can you do at Cob House?

Coarse and Game Angling, walking, feed the chickens and fish, play on the timber trail and football on the field, sit and have your breakfast or lunch overlooking lakes and parkland, kids parties, breakfast meetings and meeting room for hire you will also be able to buy Koi and other ornamental and coarse fish all spawned on site here at Cob House. Later in the year there will be an archery range not to mention the goats, alpacas, pigs and other animals!! Look out for the opening date and summer events outside the entrance and pop in and see us!

Regards, all at Cob House

Wedding News

Heartiest congratulations to Jonathan Fowle and Caroline and to David Richards and Becky who recently married at Wichenford Church. Our very best wishes to both couples for their future happiness.



Nora Parsons Day Centre



Nora Parsons Day Centre

An advance notice that the Day Centre will be holding an Auction in Martley Memorial Hall in September. Date yet to be finalised so please look out for notices nearer the time. If anyone has any item they could donate for auction or any service they would like to donate please call the Day Centre on 01886 888374 and leave a message or call Janet Dale on 01886 888472. Any reasonable item considered.

Please watch out for the date; our patrol Cath Mackie (BBC Midlands Today) will be with us for the evening and Dave Bradley of BBC Hereford & Worcester will be acting as auctioneer.

Janet Dale, Secretary

Our Move Away From Wichenford

We have lived in Wichenford for a little over 17 years and have been very happy and will miss our friends and neighbours. We are moving to Broadwas on Teme to a smaller house with a muc- longed-for huge garden. Please welcome Amy Cresswell and her partner Geraint with their two young children Lily and Maddock: we hope they will be as happy here as we have been..

But before we go, we want to offer congratulations to our eldest son Andrew Eden and his wife Katie who have become proud parents to

Alexandra Grace, who was born on Saturday 26 June.

Tony and Carole Eden

Violet Wilby Memorial Music Award



Applications are invited for the Violet Wilby Memorial Music Award. Applicants must be at school or college, reside in the Parish of Wichenford and be studying music in one form or another. Personal letters of application should be sent to Mrs C Wetherall, Abingdon Cottage, Wichenford, WR6 6XY before the closing date of 10 September 2010.

Carma Wetherall

Thank you

The Childrens Society thank all collectors for their generous donation this year of £128.68.

Pam Webb



Little Witley Film Society News



A big thank you to our audience for your support of last season's films. We truly had a great year. We enjoyed it immensely and you gave us lots of encouragement and feedback. We averaged 65 people per showing – which was a relief (!) and also actually enabled us to end up in the black! So we used some of our “surplus” for a party to celebrate our first year, with supper this time as a treat, and three unusual short films, which were equally a treat! The party also gave us time to talk more and hear suggestions and swap ideas about future directions for the film soc and of course generally have a good time!

We have collated the two audience surveys we carried out and we can now announce next year's main films! They will be:

25 Sept Looking for Eric

30 Oct The Reader

27 November Julie and Julia

22 Jan 2011 Brideshead Revisited

26 Feb 2011 The Bucket List

26 March 2011 Cherry Blossoms

23 April 2011 Invictus.

Many people have said they are happy whatever the film is because it's a great social evening anyway! Hopefully, and by popular request, we plan to have a “Golden Oldie “ for the next year's end-of-season party which,

as this year, will be in May.

If you'd like to be a member, there is still time to join. Membership for the year costs £30 and for this you get a “free film” and free entry to the end-of-season party. For us, signed-up members are important “up front” support. Membership helps in another way too - we pay on average £115 to hire a film from the distributor, depending on the door numbers. But if you are a prepaid member we don't pay the distributor for your ticket, so it keeps our costs down on the night, and of course, ensures you a seat! We already have about 50 members next season.

I'm hoping we could ask the new BFFS president—no less than the legendary director Ken Loach—to introduce our first film of the season,

As you probably know, we are now active members of the British Federation of Film Societies. This is the national organisation for community cinema.

So we're in touch with fellow film societies over the country and we attend events they promote: meetings, screenings, discussions etc. We have been very busy this summer putting together an application for the BFFS Best New Film Society Of The Year award!! If by any small chance we were to win, I'm hoping we could ask the new BFFS president - no less than the legendary director Ken Loach – to introduce our first film of the season, since it's his latest film! Ken is reported as saying he is “more than happy to support the BFFS, as

independent films are having a very hard time getting shown, and local film societies are filling an important gap for film makers now." But hubris may attend us...Lets just say we look forward to seeing you in September!

Jean Latham, Chair of LWFS

Historic Churches Annual Cycle Ride

This is the annual rallying call to all cyclists in our three parishes! Please volunteer to participate in the annual sponsored cycle ride, which generates precious funds for the Worcestershire and Dudley Historic Churches Trust. The Trust plays a vital role in the life of the church by awarding grants for the preservation, repair, maintenance and improvement of any Christian church in the Worcestershire Diocese. Please could those who are willing to ride on Saturday 11 September telephone me as soon as possible and I will issue them with the sponsorship papers. In addition, I would be most grateful if someone in each of Martley and Wichenford parishes could offer to take care of the pre- and post-event paperwork for their riders, including the collation and despatch of monies raised (I will take this on for the Lower Teme Valley).

Thanks to the generosity of our sponsors, we have been able to send substantial cheques each year. Last year, seven cyclists, representing Broadwas, Cotheridge and Knightwick, raised £1338. So there's a challenge!

Chris Baker 01905 333225

Farm Open Day

Dave and Deb Powell will be opening The Pard House Farm, Shelsley Beauchamp, on the afternoon of Saturday 25 September for a rare chance to view a traditional, working livestock farm in the Teme Valley.



More information to come in the September issue of The Villager.

Concert of Baroque Music **Concert of Baroque Music** **St Leonard's Church, Cotheridge** **Saturday 11 September 2010** **at 3.00pm**

Please put in your diary this date when a concert will take place in Cotheridge church. The first half of the programme will feature a performance of the Stabat Mater by Pergolesi,, one of the finest examples of religious music of the Baroque period, sung by Jane Field (soprano), and Margot Stringer (alto), the organ accompaniment being played by John Swindells. The second half will contain short pieces by Vivaldi and organ solos which will reflect the musical period of the concert. St Leonard's church is an attractive and intimate venue for an autumn recital and a warm welcome awaits fans of composers from this period, as well as those for whom a baroque music concert will be a first time experience. Tickets, which can be purchased at the door, cost £5. Tea and cakes will be provided in the interval.

Knightwick Surgery Race for Life

The Knightwick Surgery Team successfully completed the 5k Race for Life course on Sunday 13 June 2010 with everyone finishing in under an hour. We have raised a fantastic **£1,254.17** for Cancer Research UK. We would like to express our heartfelt thanks to everyone for their generosity and support and a big thank you to the shops and pubs who rattled collection tins on our behalf.

Mobile Library

Ockeridge

Silver Oaks 9.45–10.05

Wichenford

Malvern View 10.10–10.35

Church 10.45–11.05

Kings Green Farm 11.15–11.40

Rosses Green 11.45–12.05

Martley Hillside

Horn Lane Bungalows 12.10–12.25

Martley

Taylor's of Martley 12.30–12.45

LUNCH

Heaton House 1.20–1.50

Church 1.55–2.15

Clifton

Village Hall 2.30–3.50

The Mobile Library will be visiting these stops on Wednesdays on the dates listed below in 2010:

18 August 8 September

29 September 20 October 10 November

1 December 22 December

Any enquiries should be made to Stourport Library, Worcester Street, Stourport, Worcs DY13 8EH, tel: 01905 822722 stourportmobile@worcestershire.gov.uk

Malvern Hills The water cure

A Brief History

Malvern water is famous throughout the world. The Queen drinks it and people still travel many miles to collect water from the springs on the hills. The healing powers of Malvern water were first mentioned as far back as 1622 in Bannister's Breviary of the Eyes.

"A little more I'll of their curing tell.

How they helped sore eyes

with a new found well.

Great speech of Malvern Hills

was late reported.

Unto which spring

People in troops resorted."

Bannister's Breviary of the Eyes

"It is a most beautiful place. Oh heavenly to meet the cold waters as I did this morning when I went out for a shower bath" *Charles Dickens on the Malvern water cure.*

Not the greatest piece of poetry perhaps, but an early mention of what was probably Holy Well, the first pure water source on the hills. The water was bottled and sent all over the country from as early as the reign of James the first.

Dr Nash, in the 18th century, quoted the lyrics of a song from that period.

"A thousand bottles there were filled weekly

and many costrels* rare
for stomachs sickly.

Some of them into Kent,
some were to London sent,
others to Berwick went.

Oh Praise the Lord."

Traditional song

(*Costrel=A portable container usually cylindrical or barrel shaped.)

Taking the waters

The popularity of the water cure at Malvern owes much to two doctors, who set up hydrotherapy centres in the area; Dr James Wilson and Doctor James Manby Gully. Dr Wilson had first hand knowledge of the water cure practised by Vincent Priestnitz in Graefenburg. Dr Gully, an Edinburgh graduate, had published a book on 'neuropathy' in 1837. The first Water Cure establishment in Great Malvern opened in 1842, and was at The Crown Hotel, where Lloyds Bank now stands. People staying there would have had treatment using water from St. Anne's Well.

The cure

The regime at a hydrotherapy centre consisted of plenty of fresh Malvern water, lots of exercise and a strict diet—which may account for its success. There was an early start for those taking the cure: 6am 'Packing': The patient is wrapped in a long wet sheet and covered in eiderdowns. 7am: The patient is unwrapped, given a cold shower and rubbed down. The showers were of two types: the descending douche where the patient stood under a stream of cold Malvern water: the ascending douche, which is best left to the imagination.



There followed a hike up the hills, drinking a glass of water at each well or spring. The infirm were allowed to ride up on donkeys until well enough to walk. Strict diet: No alcohol or rich foods.

Darwin

Many famous people came to Malvern to 'take the cure', including Charles Darwin and his wife (their daughter is buried at Malvern Priory), and Charles Dickens and his wife Katherine, who stayed there in 1850.

Warning notice

"It is a most beautiful place. Oh heavenly to meet the cold waters as I did this morning when I went out for a shower bath." Charles Dickens: letter.

The water was famed for its purity, though this may be because an analysis in 1757 by Dr. John Wall found that there was nothing remarkable contained in it. This has led to a very famous piece of local verse, still widely known.

"The Malvern waters, says Dr. John Wall, is famed for containing nothing at all." *Traditional verse*

This hasn't stopped people travelling from miles around, to get water from the springs that still flow out of the hillside.

Taken from a feature on
www.bbc.co.uk/herfordandworcester
And see more at www.malverntrail.co.uk/malvernhills.htm

In the Garden



In the garden In August

If August is your holiday month, you might well be leaving the garden to its own devices. Do remember how unpredictable English weather is, and safeguard anything very precious! If you are staying at home, now is the time to enjoy the late summer flowers and make a few garden visits to get ideas from someone else's planting.

It is worth keeping up with the deadheading, especially roses and lavender; prune rambler roses when they finish flowering and collect fallen leaves from any plants which show signs of infection. Moulds and rusts are common in late August. If you didn't prune your Wisteria or cut your

conifer hedge in July, try to do it as soon as you can. Summer-fruiting raspberries need cutting back and strawberry plants over three years old need replacing with new ones.

Spring-flowering bulbs will be coming into the garden centres and supermarkets this month, so look out for Chionodoxa, Dwarf Iris and Leucojums, all worth trying



Please provide only
foods that will not harm
hedgehogs: tinned cat
or dog food is fine

for extra interest early in the year.

Gardens open for charity in the local area this month; High View, Martley 8 August, Moors Meadow, Collington 9 August, The Bannut, Bringsty 15 August, and The Picton Garden, Colwell 1,8,14,19 and 29 August.

JC

Please be kind to hedgehogs

You can put some fresh drinking water and hedgehog-friendly food out for hedgehogs, and other wildlife, but never bread or milk as this will cause them diarrhoea, with consequent dehydration and death. People give bread and milk because hedgehogs seem to like it, and they do not see the devastating effect it has on the hedgehog (who will go away to die).

You might think the hog is returning for his nightly snack but in reality this will be another poor hog that has come to feed on the same fatal meal.

Please provide only foods that will not harm hedgehogs: tinned cat or dog food is fine, and you can also buy special hedgehog food.

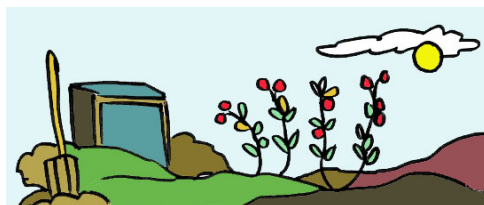
Also, please remember to check your garden before tidying, mowing, strimming, digging or lighting bonfires. You might have a hidden nest with hedgehog babies in it, either with or without mum. Mum sometimes sleeps away from, but near to, her nest



returning regularly to feed her babies. If you would like more advice or have disturbed a nest, please call 07780834411 or visit the website www.malvernhedgehogrescue.co.uk. Thankyou!

A Hill

Snap up a discounted compost bin



Worcestershire County Council and Herefordshire Council are once again offering staff and residents the chance to get discounted compost bins delivered direct to their front door. The home compost bin scheme is back for the new season and prices remain the same as last year.

On offer is a choice of a green or black bin from £12 for a 220 litre compost bin (£7 + £5 delivery) or £15 for a 330 litre compost bin (£10 + £5 delivery). Residents can get a second bin half price and when ordering more than one bin residents only pay one £5 delivery charge. A wider range of compost bins is also available, plus wormeries and Bokashi systems, and composting accessories to help people to continue composting or try it for the first time.

Composting provides a free source of nutrients to help the garden grow and it also prevents waste going to landfill. As the weather starts to improve,

householders will have more garden waste, such as grass cuttings. Garden waste can be mixed with other ingredients e.g. egg boxes, scrunched up paper and vegetable peelings, to create excellent compost.

Bins can be ordered online by visiting <http://hw.getcomposting.com> or by calling 0844 571 4444. For more information, visit the website's Home Composting.

(Continued from page 26)

worship and concentrate on the meaning of the day. It would not be unknown for these feast days to include fun and games and of course plenty of eating and drinking, which meant some of these days were curtailed by the church during the Reformation Period to curb the excesses that had begun.

It is a good thing to have a holiday, we all need them and may I wish you a very good summer holiday whatever you choose to do and wherever you choose to go. For each of us it will be different but I hope you find a way of relaxing and recharging before you return to work or school.

It is good to reflect on its origin, of taking time to meet with God on a holy day, by doing so the people felt renewed, encouraged and ready for what lay ahead. I am sure that is something each of us can benefit from in this very busy world in which we live.

God Bless,

Rev David Sherwin



Church Words

The Rectory 01886 888664

Confirmation

There will be Confirmation Classes beginning this September in preparation for our Deanery Confirmation Service on Sunday 21 November, 6pm, at St Johns Church in Worcester. Anyone interested in being part of the course please contact Revd David Sherwin on 01886 888664. You may just choose to take the course out of interest without committing yourself to being confirmed at the end. Whichever, you are welcome to join. Once we know who wants to be on the course we will negotiate the times and dates of when the course will take place.

Holiday Club

Our annual Holiday Club will be from Monday 9th to Thursday 12th August 10am-12 noon at Martley Memorial Hall and is for children aged 5-11. Anyone wishing to come, whilst welcome to turn up on the day, it would be helpful if you could contact Revd David Sherwin on 01886 888664 or Mrs Brenda Williams on 01886 888052 to book places. The theme will be “seaside rock” which promises to be an enjoyable experience for all. On Thursday lunchtime we finish with a BBQ for the children and parents and carers. If you need any further

information please contact one of the above.

Holidays

It's that season again when we go on holiday but what is a holiday for you? A dictionary definition tells us it could be the odd day off from work for which you may decide to participate in a leisure activity or just stay at home and chill or perhaps that vacation you have promised yourself, a holiday by the sea in this country or abroad enjoying local cuisine and beverages, a time of relaxation and re-charging the batteries. A holiday could also be, as its original merging of words indicates, a “holy day” when the church would celebrate a religious feast day commemorating a Saint or a particular part of the life of Christ, such as Christmas or Easter.

The word 'holiday' first appeared in the 1500's replacing an earlier word 'haliday' which was recorded before 1200 in the Old English book *Ancrene Riwe*. Before that in about 950, the word was 'haligdaeg' and appeared in the Old English *Lindisfarne Gospels*. It was a merger of the word halig (holy) plus daeg (day). Hence holidays originally had a very religious flavour and people were given these days off to enable them to

(Continued on page 25)



Church Services for August

Sun 1 August	8.00am Holy Communion, Knightwick Chapel 10.30am Holy Communion, St Laurence, Wichenford 10.30am Family Worship, St Peter, Martley 10.30am Morning Worship, St Mary Magdalene, Broadwas 6.30pm Evensong, St Leonard, Cotheridge
Mon 2 August	9.00am Morning Prayer, St Laurence, Wichenford
Tue 3 August	10am Holy Communion, St Mary Magdalene, Broadwas
Wed 4 August	10.15 Morning Prayer, St Peter, Martley
Thu 5 August	9.00am Morning Prayer, St Laurence, Wichenford
Sun 8 August	8.00am Holy Communion, St Leonard, Cotheridge 10.30am Family Worship, St Laurence, Wichenford 10.30am Holy Communion, St Peter, Martley 10.30am Morning Prayer, St Mary Magdalene, Broadwas
Mon 9 August	8.30am Morning Prayer, Martley Memorial Hall
Tue 10 August	10.00am Morning Prayer, St Mary Magdalene, Broadwas
Wed 11 August	10:15am Holy Communion, Heaton House
Thu 12 August	9.00am Morning Prayer, St Laurence, Wichenford
Sun 15 August	8.00am Holy Communion, St Peter Martley 9.00am Matins, St Leonard, Cotheridge 10.30am Holy Communion, St Mary Magdalene, Broadwas 10.30am Morning Worship, St Peter Martley 3.00pm Evening Worship, Knightwick Chapel 6.00pm Evening Worship, St Laurence Wichenford
Mon 16 August	9.00am Morning Prayer, St Peter, Martley
Tue 17 August	10.00am Holy Communion, St Mary Magdalene, Broadwas
Wed 18 August	10.15 Morning Prayer, St Peter, Martley
Thu 19 August	9.00am Morning Prayer, St Laurence, Wichenford
Sun 22 August	8.00am Holy Communion, St Mary Magdalene, Broadwas 9.30am Holy Communion, St Peter Martley 10.30am Family Worship, St Mary Magdalene, Broadwas 10.30am Holy Communion, St Laurence, Wichenford 6.30pm Evening Worship, St Peter Martley
Mon 23 August	9.00am Morning Prayer, St Mary Magdalene, Broadwas
Tue 24 August	10.00am Morning Prayer, St Mary Magdalene, Broadwas
Wed 25 August	10:15am Summer Songs of Praise, Heaton House
Thu 26 August	9.00am Morning Prayer, St Laurence, Wichenford
Sun 29 August	Big Little Church at Malvern Three Counties Showground – Rural Churches Celebration
Tue 31 August	10.00am Morning Prayer, St Mary Magdalene, Broadwas



Village Contacts



Editor of The Villager	Michelle Higgins editor@martley.org or 01886 888344 or leave articles at Martley Post Office
Advertise in The Villager	Aileen Parker—01886 888456
Church (Worcestershire West Rural Team)	<i>Rector:</i> Revd David Sherwin—01886 888664 or davidwin56@aol.com <i>Curate:</i> Revd Bruce Thomson—01886 888098 <i>Assistant Priest:</i> Revd Jennifer Whittaker—01886 833897
Martley Parish Council	<i>Chair:</i> Cllr. D Goodyear—01886 888423; <i>Clerk:</i> Sally Williams—01299 832949
Martley WI	<i>President:</i> Helen CoombeyJones—01886 888294
Martley & District Horticultural Society	Pam Minchin—01886 888521 or Margaret Jackson—01886 888654
Royal British Legion	Joyce Tyler—01886 821551
Martley Toddler Group	Will—01886 888340 or Jane—01886 888852
Martley Ramblers	Harry King—01886 888439
Martley Young Farmers	Lou Wickens—01886-812754 or Caroline Bullock—01905-333617
Path-or-Nones	John Nicklin—01886 888318 johnn@martley.org
Resource Centre	Alan Boon—01886 888527
Police “Surgery”	CSO Matt Smith 7184—Martley Local Policing Team Tenbury Wells Police Station extn. 3581
Martley Website	webmaster@martley.org
Martley Web Mesh	Richard Jackman—01886 821237 richard@martley.org John Layton—01886888460 johnl@martley.org Tom Pearsall—01886 888256 tom@martley.org
Martley Pre-School	Kath/Lucy—01886 889127 www.martleypreschool.co.uk
Martley Recreation Association (playing fields)	<i>Bookings</i> —Pat Owen 01886 888406 pat@owen01.fsnet.co.uk
Wichenford contacts for The Villager	Janet Andrews—01886 888303 or Sheila Richards—01886 888378
Kenswick & Wichenford Parish Council	Clerk—Shirley Sanders 01886 888302
Wichenford Wine Club	Chairman—Bill Hylan 01886 888431
Wichenford Local Heritage Group	Heather Rendall—01886 888239

To put organisation and its contact details on this list, or to change the details shown here, email editor@martley.org or leave a note for the editor at Martley Post Office.

And finally ...

***Put the FUN into
fund-raising!***

Bring a Bear to the Fayre!



**Pershore Abbey, Bank Holiday
Monday, 30 August Plum Fayre**

Teddy parachuting

11.30, 1.30 & 3.45

**Make a parachute & enter your
bear! (£1)**

Teddy Zip-wire Run 2.45pm

Book in your bear from 2pm (£1)

**Teddy World stall *plus go-karts,
bouncy castles, classic cars***

**NEW! Waterways Walk
Circular, FLAT 21 mile walk
Sunday 15 August
Starts Droitwich Rugby Club**

In aid of St Richards Hospice

**More info at [www.strichards.org.uk/
waterwayswalk](http://www.strichards.org.uk/waterwayswalk)
or call 01905 763963**